

IMPORTANT! KEEP THIS MANUAL FOR FUTURE REFERENCE!

INSTRUCTION MANUAL FOR USE OF CHILD RESTRAINT SYSTEM „ATLAS”

**CAR SEAT
ATLAS**



This child restraint system **chipolino** is designed and manufactured in compliance with the requirements of Regulation 44 of the United Nations Economic Commission for Europe concerning the safe transportation of children, the provisions of the Product safety Directive 2001/95/EU and Council Directive 91/671/EEC relating to the compulsory use of safety belts and child restraint systems in vehicles of the European Parliament and The Council as well as the Consumer Protection Law of Bulgarian Legislation.

NOTICE

GROUP 0+ (0-13 kg), GROUP I (9-18 kg), GROUP II (15-25kg) and GROUP III (22-36kg)

1. This is a "UNIVERSAL" CHILD RESTRAINT. It is approved to Regulation No 44, 04 series of amendments, for general use in vehicles and it will fit most, but not all, car seats.
2. A correct fit is likely if the vehicle manufacturer has declared in the vehicle handbook that the vehicle is capable of accepting a "universal" child restraint for these age groups.
3. This child restraint has been classified as "universal" under more stringent conditions than those which applied to earlier designs which do not carry this notice.
4. If in doubt, consult either the child restraint manufacturer or the retailer.



DO NOT FORGET THAT NO RESTRAINT SYSTEM CAN PROVIDE ABSOLUTE PROTECTION IN CASE OF A CRASH OR ROAD ACCIDENT! DRIVE WITH CARE WHEN THERE IS A CHILD IN YOUR VEHICLE!

IN ORDER TO ENSURE THE SAFETY OF YOUR CHILD, FOLLOW EXACTLY THE INSTRUCTIONS AND SAFETY RECOMMENDATIONS IN THIS MANUAL!

MISUSE OF THE CAR SEAT WILL CONTRIBUTE TO REDUCING ITS SECURITY AND SAFETY FEATURES! FAILURE OF THE GUIDELINES OF THIS INSTRUCTION INCREASES THE RISK OF SERIOUS INJURY OR DEATH!

SEAT POSITION OF THE CAR SEAT IN THE VEHICLE

This child restraint is suitable for use in vehicles, equipped with approved LAP/3-POINT/STATIC/WITH RETRACTOR SAFETY BELTS in compliance regulation № 16 of the UN.

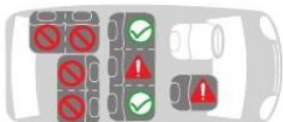


Never place the restraint system on a vehicle seat equipped with air bag! This may result in death or serious injury!

Review the instructions of the vehicle for information about airbags and conditions of transportation of children.

Install the car seat **ONLY ON SEAT** which are **FORWARD** facing!

Do not install the car seat on seat which are **SIDEWAYS** or **REARWARD** facing!



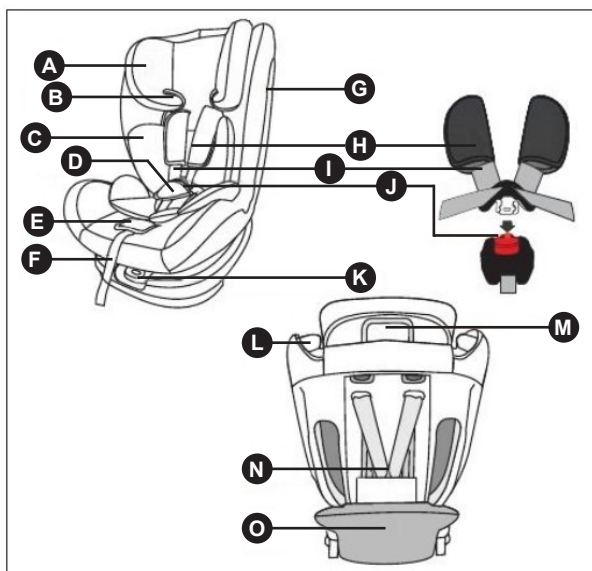
- ✔ Suitable places
- ✗ Not suitable places
- ⚠ Only if air bag is deactivated

- ❖ **CAUTION! NEVER LEAVE YOUR CHILD UNATTENDED!**
- ❖ **CAUTION! DO NOT USE ANCHOR POINTS OTHER THAN THE ONES DESCRIBED IN THIS MANUAL AND MARKED ON THE RESTRAINT SYSTEM.**
- ❖ **CAUTION! NEVER INSTALL THE CHILD RESTRAINT IN THE DIRECTION OF VEHICLE MOVEMENT AND FACING FORWARD BEFORE THE CHILD WEIGHT REACHES 9kg!**
- ❖ **CAUTION! THE CAR SEAT SAFETY MUST BE PROPERLY ADJUSTED ACCORDING TO CHILD'S HEIGHT, NOT TWISTED AND SNUG WELL AGAINST BABY'S BODY.**
- ❖ **CAUTION! THIS CHILD RESTRAINT SHOULD NOT BE MODIFIED OR ADAPTED WITH NEW FITTINGS, WITHOUT PREVIOUS AUTHORIZATION BY THE COMPETENT AUTHORITY.**
- ❖ **CAUTION! KEEP AWAY FROM FIRE!**
- ❖ Installation in the vehicle and securing the child in the car seat to be done only by adult!
- ❖ The hard parts and the parts of the child restraint made of plastic should be located and installed so that when the vehicle is in normal use, they can not be trapped by a sliding seat or in a door of the vehicle.
- ❖ Do not allow the safety belts of the car seat and the vehicle to be twisted, frayed or torn, latches and locks (buckles) must be always in good order and firmly fixed.
- ❖ If you find uncertainty or defect in the structure, latches, straps or locking mechanisms of the car seat, discontinue usage until removal of the damaged parts and replacement with new ones.
- ❖ After a violent impact the car seat and belts may be damaged. therefore, it is recommended to replace the car seat with new one.
- ❖ Never use a second hand child restraint. it may have suffered structural damage, which may make the child restraint extremely dangerous.
- ❖ Do not use this car seat without its seat cover and do not replace it with a new one, unless supplied by the manufacturer. The fabric parts are integral parts of the restraint system and its safety features!
- ❖ Always make sure that you are not carrying any unsecured objects, especially on the back shelf, which, in case of an accident, may injure the car's occupants
- ❖ Do not put additional pads except the ones supplied from the manufacturer! Placing additional pads may obscure the safety of your child.
- ❖ Do not use spare parts and other components not supplied by the manufacturer. The manufacturer assumes no responsibility for safety in the event that are used spare parts other than original.
- ❖ It is recommended to cover the car seat if the vehicle is parked under strong sun shine – extreme sun exposure will make the plastic to deteriorate and the fabric to fade. Please, check that the child restraint has not become too hot before placing your child seat.
- ❖ The child car seat does not replace the child's cot or bed. When a child needs a sleep, you have to place him in a suitable baby stroller, baby crib or bed.
- ❖ Do not attach objects with long cords or strings on the car seat in order to avoid danger of suffocation!
- ❖ Never place a child seat on beds, couches or similar soft surfaces!
- ❖ Do not allow children to play with the product!
- ❖ Do not remove stickers and warnings – they contain important information!
- ❖ The packaging of the product must be kept out of the reach of children at the time of and after un packing in order to avoid the risk of strangulation!

PRODUCT FEATURES

- ❖ Child restraint restraint while traveling in a vehicle designed for children weighing from 0 to 36 kg, classified in weight groups:
 - 0+ (0-13 kg)** – child age 0 up to 15 months
 - I (9-18 kg)** - child age 9 months up to 4 years
 - II (15-25 kg)** - child age 3 up to 7 years
 - III (22-36kg)** - child age 6 up to 12 years
- ❖ The restraint system is installed in direction opposite to the direction of the vehicle for weight group 0+;
- ❖ The restraint system is installed in FORWARD facing direction for groups I, II and III;
- ❖ 5-point safety belts;
- ❖ Backrest recline in 4 positions;
- ❖ Head rest height adjustment;
- ❖ The seat rotates at 360°.

MAIN PARTS DIAGRAM



- A. Headrest
- B. Belt guide (on backrest)
- C. Soft cushion
- D. Soft crotch belt pad
- E. Shoulder straps length adjusting button
- F. Adjusting strap
- G. Backrest
- H. Soft shoulder straps pads
- I. Shoulder belt straps
- J. Central buckle
- K. Rotation seat lever
- L. Diagonal belt guide
- M. Headrest height adjusting handle
- N. Metal connector of the belts
- O. Base

INSTRUCTIONS FOR USE

IMPORTANT!

- Follow exactly the instructions and sequence of installation steps and use of the product described in the text and figures of this manual.
- Check the security of fixing after each operation!
- ALWAYS CHECK THE SECURITY OF FIXING OF THE SAFETY BELTS!

1. SECURING THE CHILD IN THE VEHICLE – GROUP 0+ (0-13 kg)

IMPORTANT! Car seat is in „REARWARD FACING” position using the 3-point (diagonal and lap) belt of the vehicle. The child in the car seat is secured with the 5-point safety harness.

- 1-1 – Pull the backrest recline adjusting handle „R”. Release the handle in order to fix the seat.
- 1-2 – Pull the rotation seat lever with one hand (a) and rotate the seat (b) with your other hand at 180°.
- 1-3 – Place the car seat in the vehicle seat in position REARWARD FACING.
- 1-4 – Pull the vehicle belt (a) and thread the diagonal belt through the backrest guide.
- 1-5 – Remove the soft cushion of the car seat (a), thread the vehicle lap belt over the seat base and put the cushion.
- 1-6 – Fasten the vehicle belt in the buckle until you hear a click.
- 1-7 – Tighten the belt in the direction shown in the figure (a).

IMPORTANT! Make sure that the vehicle belt is well attached and the car seat is securely fixed to the vehicle seat (b)!

1-8 – Loosen the car seat safety harness by pressing the shoulder straps length adjusting button and pull them out.

a and b – Unfasten the central buckle and split the belts.

1-9 – Place the child in the car seat (a). Adjust the headrest and harness height by pulling up the headrest height adjusting handle.

1-10 – Shoulder belts height level:

a – Car seat in position „REARWARD FACING” – group 0+ (0-13 kg);

b – Car seat in position „FORWARD FACING” – group I (9-18 kg).

1-11 – Place the child in the car seat and fasten the safety harness in the central buckle.

1-12 – Tighten the harness by pulling the adjusting strap.

Note: The belt must be adjusted to be snug to child's body, but without pressing him or causing discomfort. The recommended space between belt and child's body is 3cm (or two fingers).

2. SECURING THE CHILD IN THE VEHICLE – GROUP I (9-18 kg)

IMPORTANT! Car seat is in „FORWARD FACING” position using the 3-point (diagonal and lap) belt of the vehicle. The child in the car seat is secured with the 5-point safety harness.

2-1 – Pull the backrest recline adjusting handle and set the car seat in positions „1,2,3 or 4”. Release the handle in order to fix the seat.

2-2 – Pull the rotation seat lever with one hand (a) and rotate the seat (b) with your other hand at 180°.

2-3 – Place the car seat in the vehicle seat in position FORWARD FACING (a). Pull the vehicle belt (a). Thread the diagonal belt through the guide under the headrest. Then thread the belt as shown in the figure. Fasten the vehicle belt in the buckle until you hear a click.

2-4 – Tighten the belt.

IMPORTANT! Make sure that the vehicle belt is well attached and the car seat is securely fixed to the vehicle seat (b)!

2-5 – Loosen the car seat safety harness by pressing the shoulder straps length adjusting button and pull them out.

a and b – Unfasten the central buckle and split the belts.

- 2-6 - Place the child in the car seat and fasten the safety harness in the central buckle.
 2-7 - Adjust the headrest and harness height by pulling up the headrest height adjusting handle.
 2-8 - Tighten the harness by pulling the adjusting strap.

Note: The belt must be adjusted to be snug to child's body, but without pressing him or causing discomfort. The recommended space between belt and child's body is 3cm (or two fingers).

3. REMOVING THE SAFETY HARNESS

- 3-1 – Loosen the 5-point safety harness (a). Unfasten the central buckle and split the belts from the metal connector on back of the seat (b and c).
 3-2 – Remove the soft shoulder pads.
 3-3 – Remove the central buckle of the harness and store the adjusting strap in the opening on the back of the car seat.

4. SECURING THE CHILD IN THE VEHICLE – GROUP II (15-25kg) and GROUP III (22-36kg)

- 4-1 - Car seat is in „FORWARD FACING” position.

IMPORTANT! The child is secured with the 3-point (diagonal and lap) vehicle belt.

IMPORTANT! When using the car seat for children weighing from 15 up to 36 kg (groups II and III), you must remove the 5-point safety harness, as described in point 3.

- 4-2 - Pull the backrest recline adjusting handle and set the car seat in positions „1,2,3 or 4”. Release the handle in order to fix the seat.

- 4-3 – Place the car seat is in „FORWARD FACING” position.

- 4-4 - Pull the vehicle belt. Thread the diagonal belt through the guide on the headrest. Then thread the belt as shown in the figure. Fasten the vehicle belt in the buckle until you hear a click.

- 4-5 - Adjust the headrest and harness height by pulling up the headrest height adjusting handle.

ATTENTION! The vehicle belt should not be loose or twisted!

- 4-6 – Placing the car seat on the vehicle seat and securing the child using the 3-point vehicle belt.

- a – Place the car seat in a FORWARD FACING position and adjust the recline angle in positions 1,2,3, and 4.

- b – Pull the 3-point vehicle belt.

- c – Place the child in the seat and thread the vehicle belt as shown in the figure.

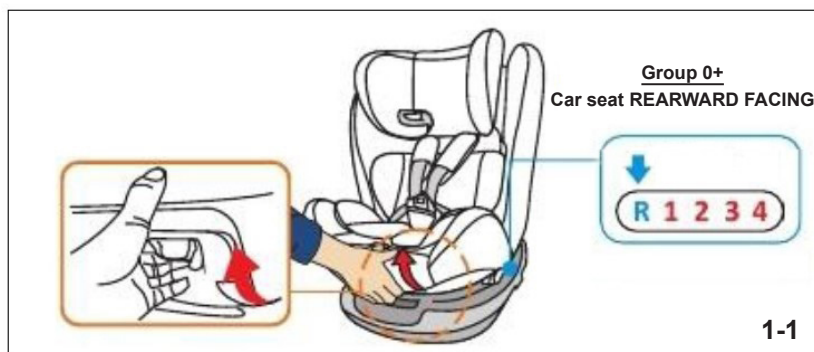
- d – Tighten the vehicle belt in the direction shown in the figure.

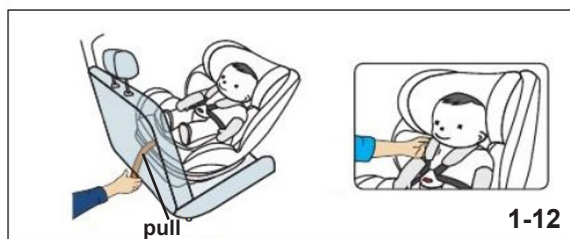
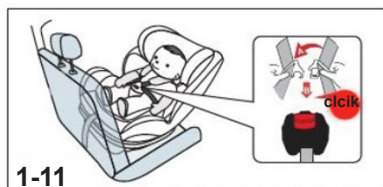
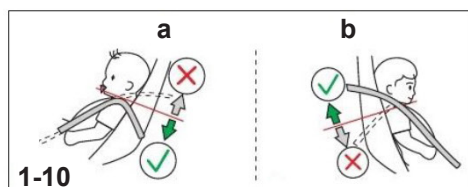
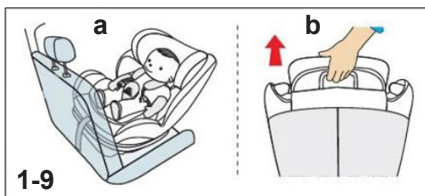
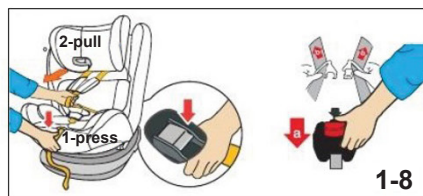
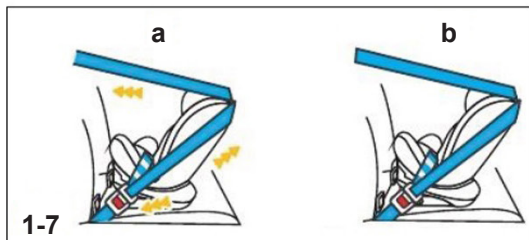
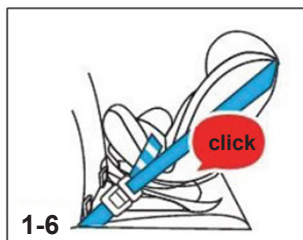
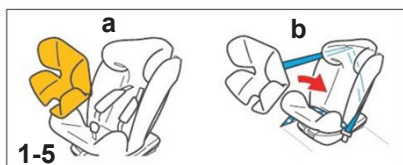
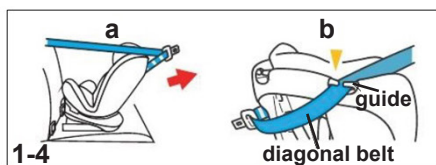
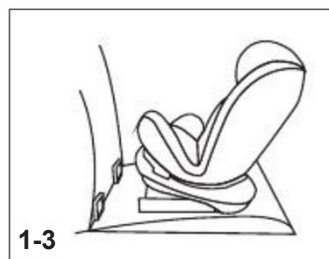
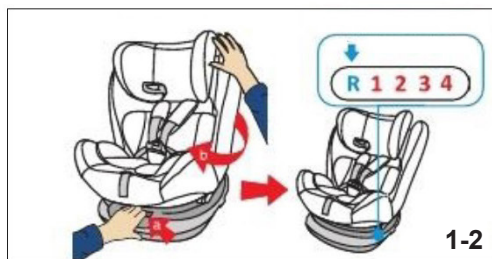
- e – **ATTENTION!** Make sure the lap vehicle belt is laying well on the child's lap.

5. REMOVING THE UPHOLSTERY

- 5-1 – Remove the headrest upholstery.

- 5-2 – Remove the upholstery by starting from bottom to top.





FORWARD FACING car seat

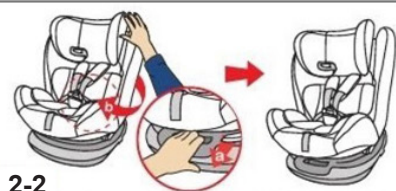
Group I

Positions: 1,2,3,4

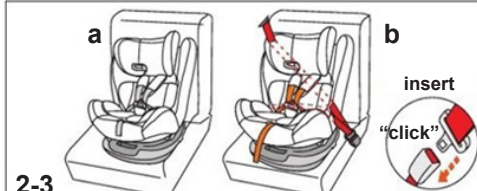
R 1 2 3 4



2-1



2-2

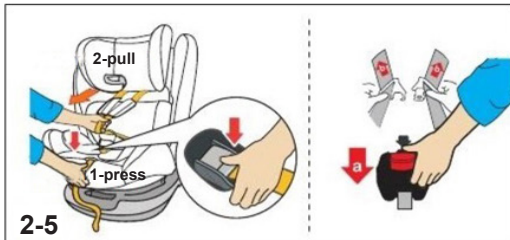


2-3

insert
"click"



2-4

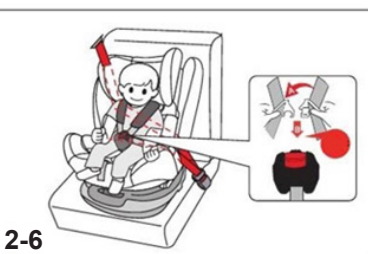


2-5

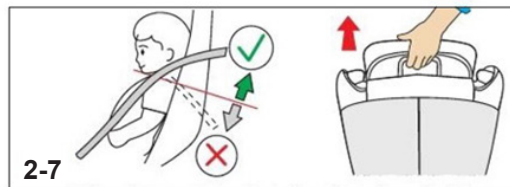
a

b

insert
"click"



2-6



2-7

a

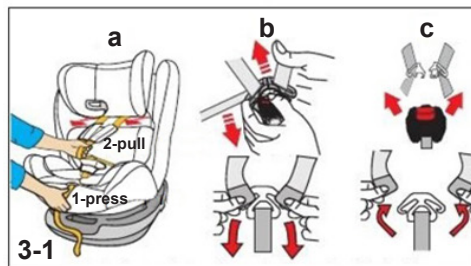
b

insert
"click"



2-8

pull



3-1

a

b

c

1-press

2-pull

3-1

pull

1-press

2-pull

3-1

pull

1-press

2-pull

3-1

pull

1-press

2-pull

3-1

pull

1-press

2-pull

3-1

pull

1-press

2-pull

3-1

pull

1-press

2-pull

3-1

pull

1-press

2-pull

3-1

pull

1-press

2-pull

3-1

pull

1-press

2-pull

3-1

pull

1-press

2-pull

3-1

pull

1-press

2-pull

3-1

pull

1-press

2-pull

3-1

pull

1-press

2-pull

3-1

pull

1-press

2-pull

3-1

pull

1-press

2-pull

3-1

pull

1-press

2-pull

3-1

pull

1-press

2-pull

3-1

pull

1-press

2-pull

3-1

pull

1-press

2-pull

3-1

pull

1-press

2-pull

3-1

pull

1-press

2-pull

3-1

pull

1-press

2-pull

3-1

pull

1-press

2-pull

3-1

pull

1-press

2-pull

3-1

pull

1-press

2-pull

3-1

pull

1-press

2-pull

3-1

pull

1-press

2-pull

3-1

pull

1-press

2-pull

3-1

pull

1-press

2-pull

3-1

pull

1-press

2-pull

3-1

pull

1-press

2-pull

3-1

pull

1-press

2-pull

3-1

pull

1-press

2-pull

3-1

pull

1-press

2-pull

3-1

pull

1-press

2-pull

3-1

pull

1-press

2-pull

3-1

pull

1-press

2-pull

3-1

pull

1-press

2-pull

3-1

pull

1-press

2-pull

3-1

pull

1-press

2-pull

3-1

pull

1-press

2-pull

3-1

pull

1-press

2-pull

3-1

pull

1-press

2-pull

3-1

pull

1-press

2-pull

3-1

pull

1-press

2-pull

3-1

pull

1-press

2-pull

3-1

pull

1-press

2-pull

3-1

pull

1-press

2-pull

3-1

pull

1-press

2-pull

3-1

pull

1-press

2-pull

3-1

pull

1-press

2-pull

3-1

pull

1-press

2-pull

3-1

pull

1-press

2-pull

3-1

pull

1-press

2-pull

3-1

pull

1-press

2-pull

3-1

pull

1-press

2-pull

3-1

pull

1-press

2-pull

3-1

pull

1-press

2-pull

3-1

pull

1-press

2-pull

3-1

pull

1-press

2-pull

3-1

pull

1-press

2-pull

3-1

pull

1-press

2-pull

3-1

pull

1-press

2-pull

3-1

pull

1-press

2-pull

3-1

pull

1-press

2-pull

3-1

pull

1-press

2-pull

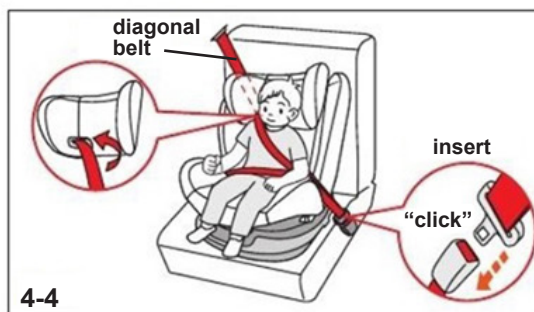
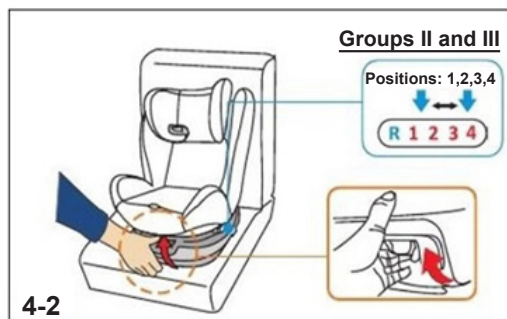
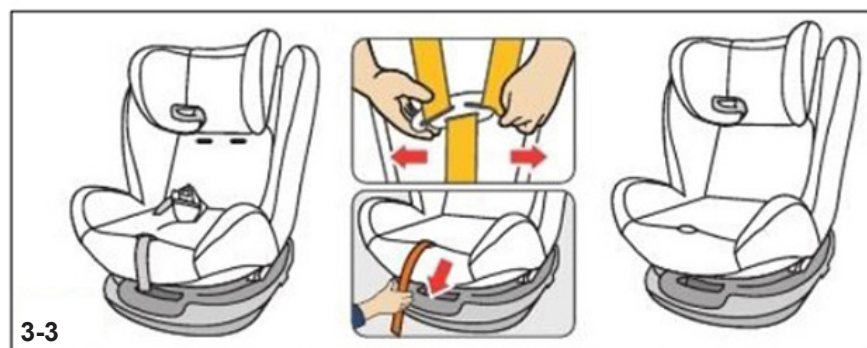
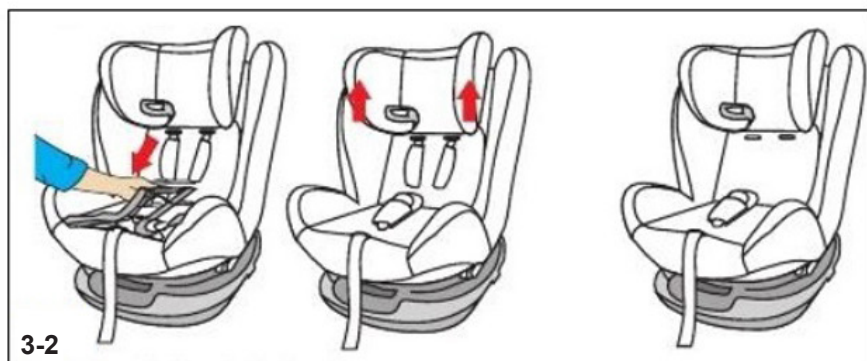
3-1

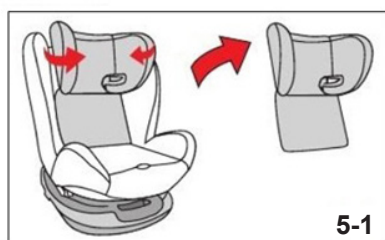
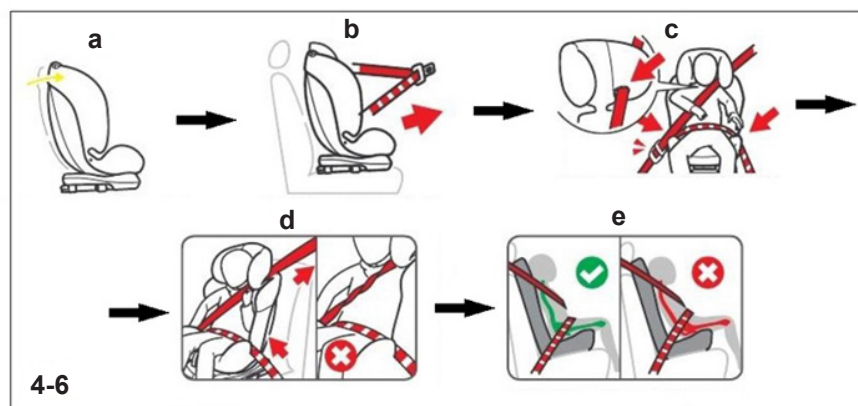
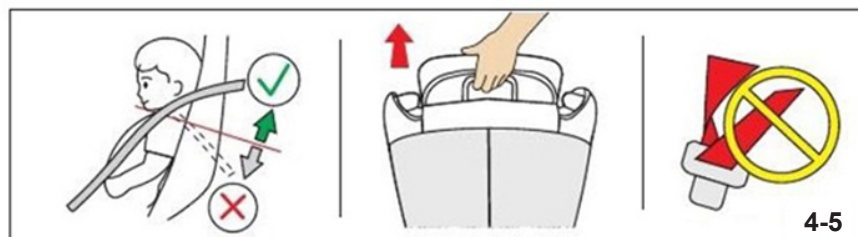
pull

1-press

2-pull

3-1





CARE AND MAINTENANCE

- ❖ Clean the plastic parts and metal parts with damp cotton cloth or sponge and mild soap.
- ❖ The upholstery and soft pads may be hand washed at 30° with mild detergent.
- ❖ Do not bleach! Do not dry clean! Do not tumble dry! Do not iron!
- ❖ Do not use abrasive, bleach or other aggressive detergents.
- ❖ Always after cleaning leave the car seat fully dry and after that use it or store it. If you keep it moist, mold may appear to your car seat.
- ❖ Harnesses must be cleaned with damp cloth and mild soap!
- ❖ Do not wet or remove the stickers. They contain important information!
- ❖ Always store your car seat indoors – on dry and clean place. Do not expose to direct environment influence - sun, rain, moisture and high temperature intervals.
- ❖ Please, contact your authorized dealer for problems connected with the use or repair of this car seat.

Fabric content:

Shell: 100% polyester

Filling: 100% polyester



Materials used: plastic, textile, metal.

STKAT021xxx



Bulgaria, Plovdiv, str. Golyamokonarskoshosse 1

www.chipolino.com