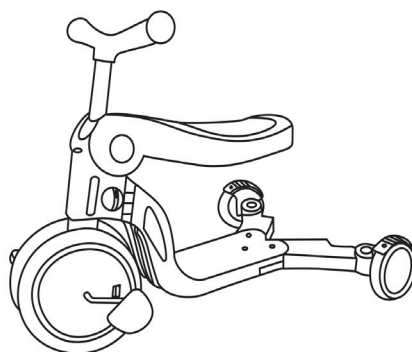
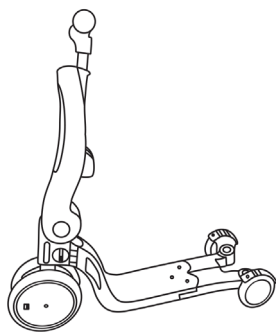


**IMPORTANT! PLEASE READ CAREFULLY THIS INSTRUCTION MANUAL
AND KEEP IT IN A SAFE PLACE FOR FUTURE REFERENCE!**

INSTRUCTION MANUAL FOR KIDS' TOY 4 in 1 – SCOOTER - BALANCE BIKE - RIDE ON - TRICYCLE „ALL RIDE”

**ALL
RIDE**



This product **chipolino** is produced in accordance with requirements of Toy safety Directive 2009/48/EC of the European Parliament and the Council, Regulation regarding Essential Requirements and Conformity Assessment of Toys, Regulation regarding Conformity Marking and the standards applicable for this toy.

**FOLLOW ALL WARNINGS, INSTRUCTIONS AND RECOMMENDATIONS
IN THIS MANUAL IN ORDER TO GUARANTEE THE SAFE USE OF THIS PRODUCT:**

CAUTION! WARNINGS!

- ❖ **CAUTION!** USE ONLY UNDER DIRECT ADULT SUPERVISION – FALLING DANGER!
- ❖ **CAUTION!** THIS TOY IS SUITABLE FOR CHILDREN AGED 3 YEARS AND UP AND WITH WEIGHT UP TO 20 KG!
- ❖ **CAUTION!** DO NOT OVERLOAD THE TOY! IT IS NOT FOR CHILDREN WEIGHING MORE THAN 20 KG!
- ❖ **CAUTION!** WHEN USE THE TOY AS TRICYCLE, BALANCE BIKE OR RIDE ON, YOU HAVE NO BRAKE!
- ❖ **CAUTION!** DO NOT USE FOR CHILDREN OVER 25KG – DANGER OF OVERLOADING THE TOY!
- ❖ **CAUTION!** BEFORE USING THE TRICYCLE, TEACH THE CHILD THE CORRECT WAY TO USE IT AND THE SAFETY RULES. Some special skills are required for riding this toy and it should be used with high attention to avoid impacts, falling and injuries.
- ❖ **CAUTION!** CHILD MUST WEAR PERSONAL PROTECTOR WHILE RIDING THIS TOY – helmet, elbow and knee protectors, suitable shoes.
- ❖ **CAUTION!** BEFORE USAGE ALWAYS CHECK IF THE STEERING BAR IS SECURELY FIXED TO THE FRAME AND ALL FASTENERS (SCREWS, BOLTS, NUTS) ARE WELL TIGHTEN.
- ❖ **CAUTION!** USE THE TOY ONLY DURING THE DAY ON EVEN PLAYGROUNDS AND AT A SAFE DISTANCE FROM STREETS OR ROAD LANES FOR VEHICLES.
- ❖ **CAUTION!** KEEP AWAY FROM FIRE OR OTHER HEAT SOURCES!
- ❖ **CAUTION!** USE THE TOY ONLY FOR ITS PURPOSE.
- ❖ **CAUTION!** THIS TOY IS NOT FOR INTENDED FOR AGGRESSIVE RIDING, TRICKS AND JUMPS.
- ❖ **ONLY** adult assembly of the TOY is required!
- ❖ **DO NOT** allow presence of children under 3 years before assembly of the TOY is complete. In this way, you will avoid their access to small or loose parts!
- ❖ The TOY is intended for one child at a time **ONLY!**
- ❖ **DO NOT** use the TOY if you find missing or damaged parts.
- ❖ The brake **MUST NOT** be used while turning left or right, because child can fall and injure. **DO NOT** let the child stand on the seat to avoid injury.
- ❖ **DO NOT** tie strings or accessories to the TOY in order to avoid the risk of suffocation.
- ❖ **DO NOT** put items or luggage in the steering bar to avoid risk of injury resulting from the TOY's instability and tipping over!
- ❖ **CAUTION!** Child must keep the steering bar with both hands to be able to ride stable and safe.
- ❖ **DO NOT** place items or heavy objects in the TOY or on it during storage or transportation to avoid damage to the frame.
- ❖ **DO NOT** use another transport means to move the TOY by pulling it.
- ❖ **DO NOT** allow the child, who is using the TOY or other children around it to touch the wheels or put items in them.
- ❖ Use away from rivers, pools, stairs or hurdles!
- ❖ **DO NOT** make changes or modifications to the TOY frame! If necessary, contact the retailer or an authorized service center for advice and repair.
- ❖ Use only spare parts, which are approved by the producer and recommended by the distributor or company service! The producer revokes all responsibility in case parts different from the original ones have been used.
- ❖ Keep nylon packages away from children to avoid risk of suffocation!

PRODUCT FEATURES

- ❖ TOY is suitable for children older than 3 years with weight up to 20 kg;
- ❖ TOY can be used as:



1. Scooter model 1 – steering bar adjustment in height – 3 positions and using brake on rear wheels.

2. Scooter model 2 - steering bar adjustment in height – 3 positions and using brake on rear wheels.

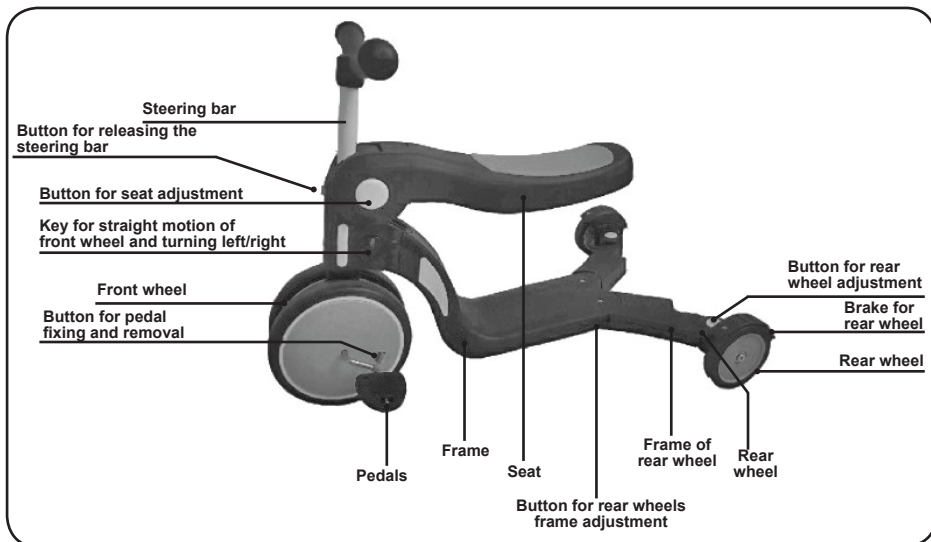
3. Ride on toy – suitable for younger children, who cannot ride the toy as scooter. When child is sitting on the seat, he/she can ride the toy as pushing it with his/her feet.

4. Balance bike – kids' bike without pedals that develops in a safe way coordination and feeling for speed, helps child to keep balance and security that comes from constant contact between his/her feet and the ground. Child learns to balance during bike riding, practicing different movements (turning left and right), controlling his/her own speed depending on his/her own readiness level.

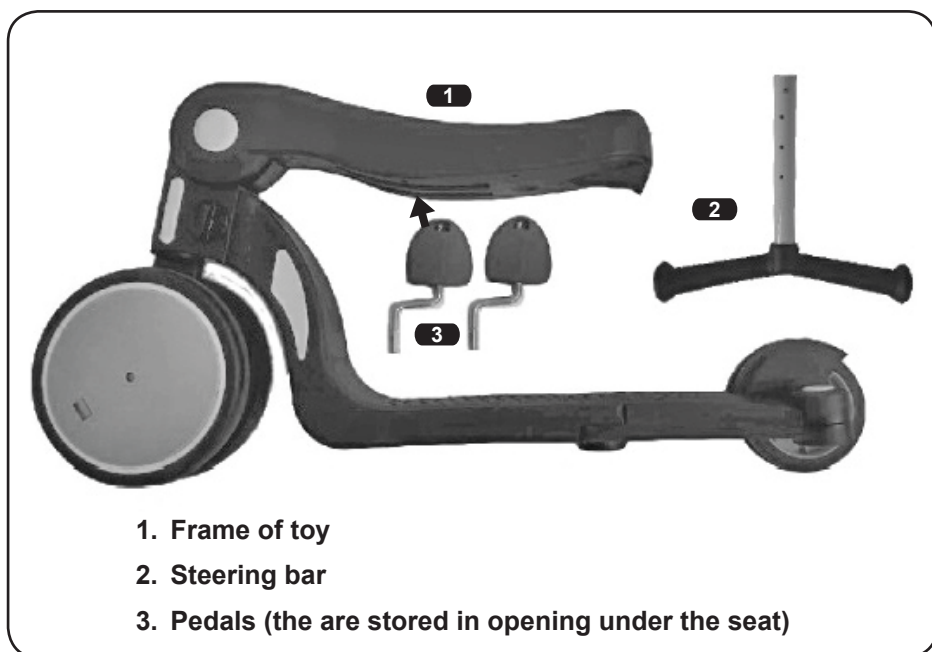
5. Tricycle – it is intended to improve child's basic skills related to coordination of hands and legs during riding tricycle or bicycle.

- ❖ Rubber grips at the steering bar with protector to prevent sliding of the hands.

MAIN PARTS



Please, make sure if all these described parts are available in the package:



ASSEMBLY INSTRUCTIONS

CAUTION! FOLLOW EXACTLY THE INSTRUCTIONS GIVEN FOR ASSEMBLY AND USAGE OF THE TOY AND CHECK THE PICTURES.

CAUTION! AFTER EACH OPERATION, MAKE SURE THAT YOU HAVE FOLLOWED THE INSTRUCTIONS CORRECTLY AND THE FIXING IS STABLE!

CAUTION! TOY MUST BE USED WITH HIGH ATTENTION BECAUSE BALANCE SKILLS ARE REQUIRED. ONLY THIS WAY YOU WILL AVOID FALLING OR IMPACTS CAUSING INJURIES OF THE CHILD.

For assembly of the toy you do not need any tools.
In set are included spare screws and allen wrench.

KID'S TOY SCOOTER

1, 2 – SETTING THE SEAT IN VERTICAL POSITION

3 – ASSEMBLY OF STEERING BAR

4 – HEIGHT ADJUSTMENT OF STEERING BAR – 3 positions

Press pin A and set the steering bar upwards or downwards until you reach required position.

Note: Make sure the pink jumps out of the opening and steering bar is fixed!

5 – BUTTON FOR DIRECTION OF FRONT WHEEL

Grab the key with hands at both sides and rotate it so that arrow shows “down” (marked with 2 dots).
Front wheel will be set in straight motion direction only.

6 – REAR WHEELS POSITION AND FRAMES OF REAR WHEELS ADJUSTMENT

Press the button for rear wheel adjustment and fix it in **position 1**.

Press the button for rear wheel frame adjustment and fix it in **position 1**.

7 – ASSEMBLED TOY SCOOTER – MODEL 1

8 – USING THE BRAKE AS MODEL 1

To use the brake during ride, child has to step on it with one of the feet and press it until scooter stops.

9 – ADJUSTMENT OF REAR WHEELS FRAMES

10,11 – ADJUSTMENT OF REAR WHEELS IN POSITION 2

12, 13 – ADJUSTMENT OF REAR WHEELS FRAMES IN POSITION 2

14 – ASSEMBLED TOY SCOOTER – MODEL 2

15 – USING BRAKE AS MODEL 2

To use the brake during ride, child has to step on it with one of the feet and press it until scooter stops.

RIDE ON TOY

16 – REMOVAL OF STEERING BAR

17, 18 – SETTING THE SEAT IN HORIZONTAL POSITION

19 – ASSEMBLY OF STEERING BAR

Note: During assembly, button for removal must jump out.

To remove the steering bar, press the button and pull the steering bar upwards.

20 – BUTTON FOR DIRECTION OF FRONT WHEEL

Grab the key with hands at both sides and rotate it so that arrow shows “up” (marked with 3 dots).
Scooter will turn left/right.

21 – ASSEMBLED RIDE ON TOY

KID'S TOY BALANCE BIKE

22 – ADJUSTING OF REAR WHEELS FRAMES OUTWARDS

23, 24 – SETTING THE REAR WHEELS POSITION 1

25 - ADJUSTING OF REAR WHEELS FRAMES INWARDS

26 - ASSEMBLED BALANCE BIKE TOY

KID'S TOY TRICYCLE

27 – PREPARATION OF PEDALS

Take out the pedals from the opening under the seat.

28 – ASSEMBLY OF PEDALS

To remove the pedals pull the button and then take out the pedal from the wheel.

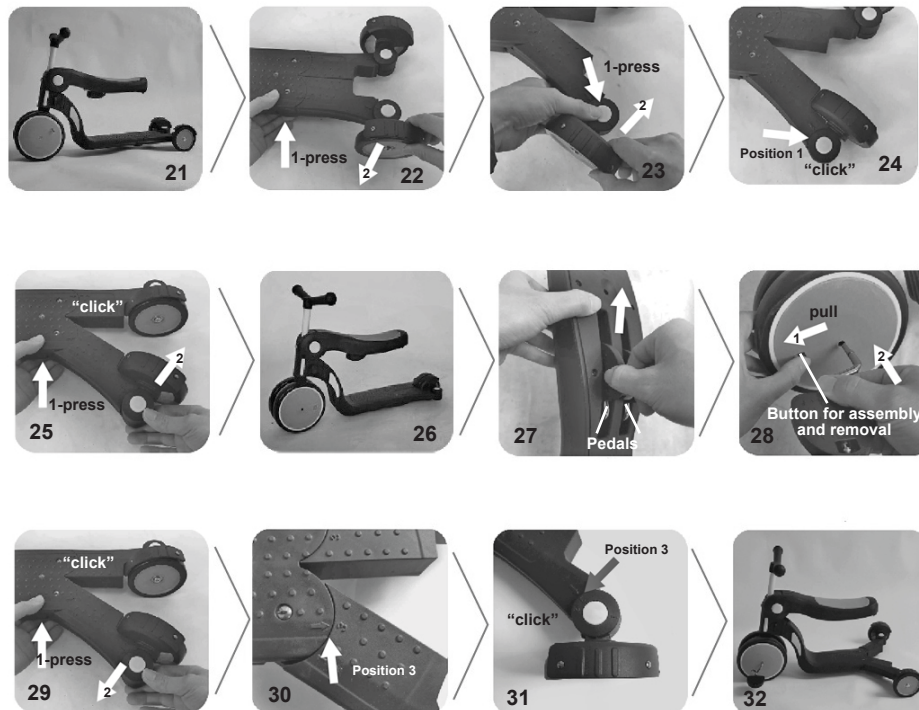
29 – ADJUSTING OF REAR WHEELS FRAMES OUTWARDS

30 - ADJUSTMENT OF REAR WHEELS FRAMES IN POSITION 3

31 – ADJUSTMENT OF REAR WHEELS IN POSITION 3

32 – ASSEMBLED TOY TRICYCLE

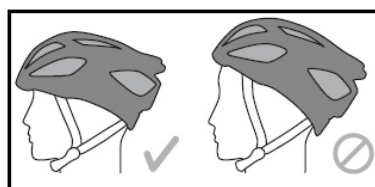




Using of helmet, knee and elbow protectors, shoes

For better safety during riding child should wear a helmet, knee and elbow protectors and appropriate shoes!

The helmet must be steady on the head, not tilted back or in position in which it does not protect the forehead.



MAINTENANCE GUIDELINES

- ❖ Periodically check the good working order of the tricycle parts.
- ❖ Do not wash the TOY and do not soak the TOY in water. Use a soft damp cloth and water or neutral liquid detergent.
- ❖ Do not use aggressive detergents, containing abrasive particles, ammonia, bleach or spirits.
- ❖ Regularly oil the moving parts.
- ❖ Do not use on sand.
- ❖ Do not store the TOY in hot environment or near strong sources of heat, in order to avoid the plastic parts from deforming.
- ❖ Store the TOY in clean and dry place indoors. Do not expose to direct sunlight, rain, high temperature intervals, moisture or harsh weather!
- ❖ Always let the TOY to dry out fully before storing or using it, in order to avoid mold and rust.
- ❖ Contact your authorized dealer if consultation or repair is needed.

Materials used: plastic, metal.

DSAR02xxxxx/ DGN5-1



Bulgaria, Plovdiv, Str. Golyamokonarsko shosse № 1
www.chipolino.com