

**IMPORTANT! KEEP THIS MANUAL FOR FUTURE REFERENCE
DURING ENTIRE USAGE OF THE PRODUCT!**

INSTRUCTION MANUAL FOR USE OF CHILD RESTRAINT SYSTEM MODEL „GALAXY”

GALAXY



This child restraint system **chipolino** is designed and manufactured in compliance with the requirements of Regulation No 44 of the United Nations Economic Commission for Europe concerning the safe transportation of children, the provisions of the Product Safety Directive 2001/95/EU, Directive 91/671/EEC relating to compulsory use of safety belts in vehicles as well as Consumer Protecting Law from national legislation.

NOTICE
GROUPS 0+, I, II and III

1. This is a "UNIVERSAL" CHILD RESTRAINT. It is approved to Regulation No 44, 04 series of amendments, for general use in vehicles and it will fit most, but not all, car seats.
2. A correct fit is likely if the vehicle manufacturer has declared in the vehicle handbook that the vehicle is capable of accepting a "universal" child restraint for these age groups.
3. This child restraint has been classified as "universal" under more stringent conditions than those which applied to earlier designs which do not carry this notice.
4. If in doubt, consult either the child restraint manufacturer or the retailer.



**DO NOT FORGET THAT NO RESTRAINT SYSTEM CAN PROVIDE ABSOLUTE PROTECTION IN CASE OF A CRASH OR A ROAD ACCIDENT!
DRIVE WITH CARE WHEN THERE IS A CHILD IN YOUR VEHICLE!**

**IN ORDER TO ENSURE THE SAFETY OF YOUR CHILD
FOLLOW EXACTLY THE INSTRUCTIONS AND SAFETY
RECOMMENDATIONS IN THIS MANUAL!**

**MISUSE OF THE CAR SEAT WILL CONTRIBUTE TO REDUCING ITS
SECURITY AND SAFETY FEATURES! FAILURE OF THE GUIDELINES OF THIS
INSTRUCTION INCREASES IN THE RISK OF SERIOUS INJURY OR DEATH!**

CAUTION!

**NEVER INSTALL THE CAR SEAT IN DIRECTION OF CAR MOTION AND WITH CHILD
"FORWARD FACING" BEFORE CHILD REACHES WEIGHT AT LEAST 9 kg!**

PLACE OF THE CAR SEAT IN THE VEHICLE

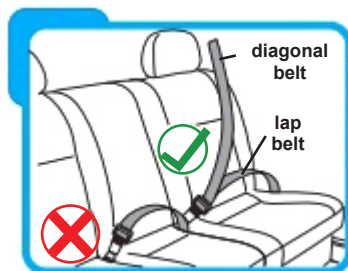
This car seat must be used only in vehicles fitted with **APPROVED LAP/ 3-POINT/ STATIC / WITH RETRACTOR CAR SAFETY BELTS**, approved according to rule № 16 of UNECE and the relevant national laws!



CORRECT FITTING / SUITABLE

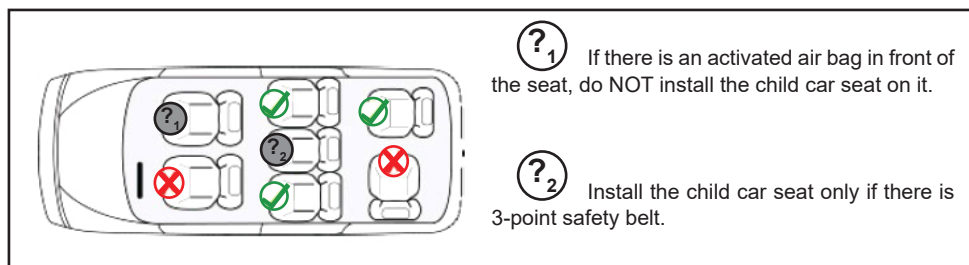


INCORRECT FITTING/NOT SUITABLE



Never install and use the car seat in a REARWARD POSITION on a seat equipped with an airbag which cannot be deactivated! This may lead to death or serious injury!

Review the instructions of the car seat for information about airbags and conditions of transportation of children.

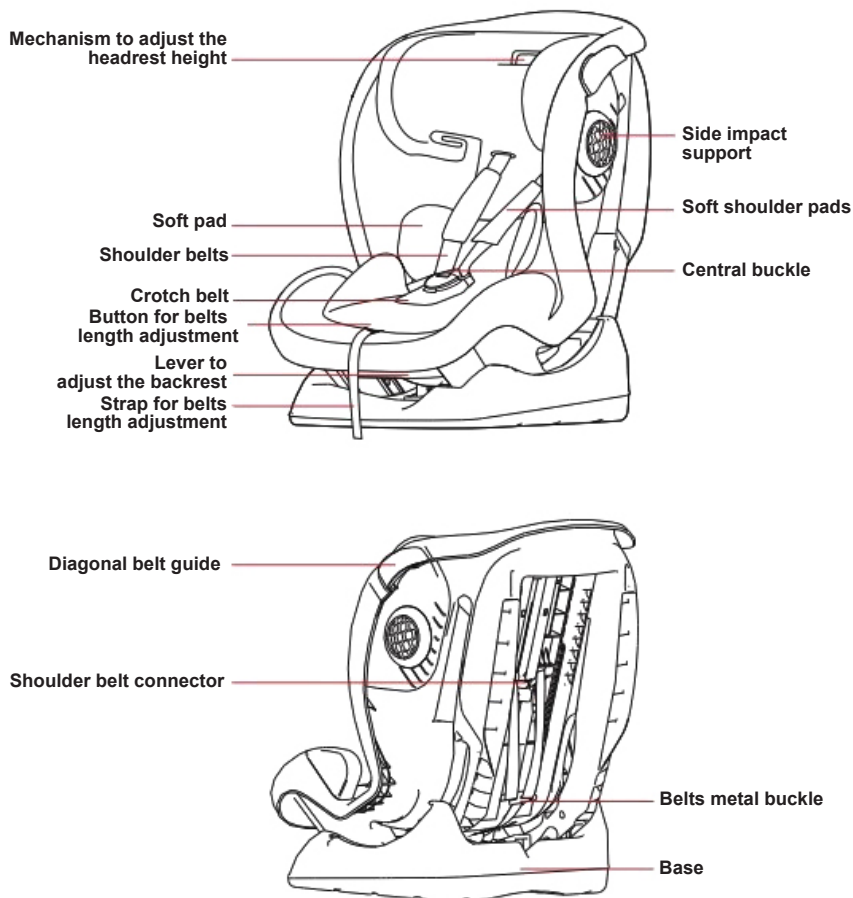


- ❖ **CAUTION! NEVER LEAVE THE CHILD UNATTENDED!**
- ❖ **CAUTION! DO NOT USE ANY LOAD BEARING CONTACT POINTS OTHER THAN THOSE DESCRIBED IN THE INSTRUCTIONS AND MARKED IN THE CHILD RESTRAINT!**
- ❖ **CAUTION! THE CAR SEAT SAFETY HARNESS AND THE VEHICLE SAFETY-BELTS MUST BE PROPERLY ADJUSTED ACCORDING TO THE CHILD'S HEIGHT, NOT TWISTED AND SNUG WELL AGAINST THE CHILD'S BODY!**
- ❖ **CAUTION! DO NOT MAKE ANY ALTERATIONS, ADDITIONS OR MODIFICATIONS TO THE DEVICE WITHOUT THE APPROVAL OF THE TYPE APPROVAL AUTHORITY!**
- ❖ **CAUTION! KEEP AWAY FROM FIRE!**
- ❖ Do not remove stickers and warnings that are permanently fixed on car seat! They are important for everybody, who uses the car seat!
- ❖ Car seats installation in the vehicle and securing the child in the car seat must be done only by adult!
- ❖ The rigid items and plastic parts of a child restraint shall be so located and installed that they are not liable, during everyday use of the vehicle, to become trapped by a movable seat or in a door of the vehicle.
- ❖ The vehicle safety-belt must be tightened and fastened, not pinched in the door, twisted on the seat or other part of the vehicle, or to rub against sharp edges or parts.
- ❖ The car seat safety belt must be well snug and fixed and adjusted according to child's size.
- ❖ Do not allow the car seat safety-belts and the vehicle safety-belts to be twisted, frayed or torn, the latches and the locks (the buckles) must be always in good order and firmly fixed.
- ❖ If you find uncertainty or defect in the construction, latches straps or locking mechanisms of the car seat, discontinue usage until removal of the damaged parts and replacement with new ones.
- ❖ The car seat should be changed when it has been subject to violent stresses in an accident.
- ❖ Never use a second hand child restraint. It may have suffered structural damage which may make the child restraint extremely dangerous.
- ❖ The child restraint shall not be used without the cover! The seat cover should not be replaced with any other than the one recommended by the manufacturer, because the cover constitutes an integral part of the restraint performance.
- ❖ Any luggage or other objects liable to cause injuries in the event of a collision shall be properly secured.
- ❖ Do not put any additional pads except the ones supplied from the manufacturer! Placing additional pads may obscure the safety of your child!
- ❖ Do not use spare parts and other components not supplied by the manufacturer. The manufacturer assumes no responsibility for safety in the event that is used spare parts other than original.
- ❖ The car seat should be kept away from sunlight to prevent the child from burning and any deformation of the seat, especially of the plastic parts.
- ❖ The car seat does not replace the child's cot or bed. When a child needs a sleep, you have to place him in a suitable baby stroller, baby crib or bed.
- ❖ Do not attach additional cords and strings on the car seat to avoid the risk of suffocation!
- ❖ Never place the child seat on beds, couches or similar soft surfaces!
- ❖ Do not allow children to play with the product!
- ❖ Keep the plastic bag away from babies and children to avoid danger of suffocation!

PRODUCT FEATURES

- ❖ A Child Restraint System designed for children weighing from 0 to 36 kg., classified in mass groups:
 - **0+** : 0-13 kg (from birth up to 18 months),
 - **I** : 9-18 kg (from 9 months up to 4 years),
 - **II** : 15-25 kg (from 3 years up to 6 years),
 - **III** : 22-36 kg (from 6 years up to 12 years);
- ❖ Car seat must be installed in direction opposite to the car motion, child is **“rearward facing”** for mass **group 0+**;
- ❖ Car seat must be installed in direction to the car motion, child is **“forward facing”** for mass groups **I, II and III**;
- ❖ 5-points safety-belt;
- ❖ The headrest height can be adjusted;
- ❖ The height of shoulder belts can be adjusted;

MAIN PARTS DIAGRAM



IMPORTANT!

- Follow exactly the instructions and the sequence for installing and using the product from the text and illustrations enclosed in the manual.
- Check the security of fixing after each operation!
- **ALWAYS CHECK THE SECURITY OF FIXING OF THE SAFETY-BELTS!**

SAFETY HARNESS OF CAR SEAT

1 – Shoulder belts can be height adjusted in 4 positions.

IMPORTANT! The shoulder belts must be at child's shoulders level. Insert the belt through the slots at child's shoulder level or a little higher.

2 – CENTRAL BUCKLE OF CAR SEAT

3 – LOOSING AND TIGHTING OF CAR SEAT SAFETY BELTS

3-1 – Press the button and pull the belts towards you.

IMPORTANT! Pull the belts, not the soft shoulder pads!

3-2 – Pull the strap of belt's length adjustment. Tighten the shoulder belts so that they fit the child's body well without bringing pressure or discomfort to the child.

BACKREST RECLINE

4 – Press the lever for backrest adjustment and set to required position according mass group of child:

Group 0+ (0-13 kg): Installation "REARWARD facing" and in **Position 4.**

Group I (9-18 kg): Installation "FORWARD facing" and in **Positions 1, 2, 3.**

Group II (15-25 kg): Installation "FORWARD facing" and in **Position 1.**

Group III (22-36 kg): Installation "FORWARD facing" and in **Position 1.**

HEIGHT ADJUSTMENT OF SHOULDER BELTS

5-1 – Turn the car seat with back towards you. Split the shoulder belts from connector and the metal joint as figure shows (1, 2, 3)

5-2 – Pull the belts through the required height slots at front.

5-3 – Insert the belts through the required height slots and place them to the connector and metal joint following the opposite order according to figure 5-1 (3, 2, 1). Make sure belts are not twisted.

REMOVAL OF SHOULDER SAFETY BELTS AND SOFT PADS

6 – Pull the shoulder belts at front as described in figure 5-1 and 5-2. Insert the metal part at crotch belt through the slot and after that remove the safety belts and the soft pads.

HEADREST HEIGHT ADJUSTMENT

7 – Pull the handle for headrest adjustment and move the headrest until you reach the required position and after that release the handle. Fixing is accompanied with click sound.

GROUP 0+ (0-13 kg, from birth up to 18 months)
INSTALLATION OF CAR SEAT WITH 3-POINT VEHICLE BELT
Car seat position „REARWARD” FACING

CAUTION!

ALWAYS SECURE THE CHILD WITH 5-POINT SAFETY BELTS OF CAR SEAT.

8-1 – Pull the recline lever and set the car seat in **position 4**.

8-2 – Place the car seat in position „REARWARD” FACING, so that its front part touches tight the backrest of the vehicle seat.

8-3 – Thread the diagonal belt through the diagonal belt guide in upper part of car seat and the lap belt through the lap belt guide in down part.

8-4 – Fasten the vehicle belt in the vehicle belt buckle. Pull the belt to make sure it is fixed.

Note: Make sure the 3-point vehicle belt is not twisted and is in correct position (**view 1 and view 2**).

8-5 – Place the child in the car seat and fasten the 5-point safety belt (fig. 2). Tighten the belt (fig. 3-2).

Note: Tighten the belts so that they fit the child's body well without bringing pressure or discomfort to the child.

GROUP I (9-18 kg, from 9 months up to 4 years)
INSTALLATION OF CAR SEAT WITH 3-POINT VEHICLE BELT
Car seat position „FORWARD” FACING

CAUTION!

ALWAYS SECURE THE CHILD WITH 5-POINT SAFETY BELTS OF CAR SEAT.

9-1 – Place the car seat in position „FORWARD” FACING, so that its backrest touches tight the backrest of the vehicle seat.

9-2 – Fix the diagonal belt with the metal bracket. Insert the vehicle 3-point diagonal and lap belts through the slots as figure shows.

9-3 – Fasten the vehicle belt in the vehicle belt buckle. Pull the belt to make sure it is fixed. Make sure the 3-point vehicle belt is not twisted and is in correct position (**view 1 and view 2**).

9-4 – Place the child in the car seat and fasten the 5-point safety belt (fig. 2). Tighten the belt (fig. 3-2).

GROUP II and GROUP III (15-36 kg, from 3 years up to 12 years)
INSTALLATION OF CAR SEAT WITH 3-POINT VEHICLE BELT
Car seat position „FORWARD” FACING

10-1 – Remove the shoulder belts and the soft pad (fig. 6). Place the car seat in position „FORWARD” FACING, so that its backrest touches tight the backrest of the vehicle seat.

10-2 – Place the child in the car seat as figure shows.

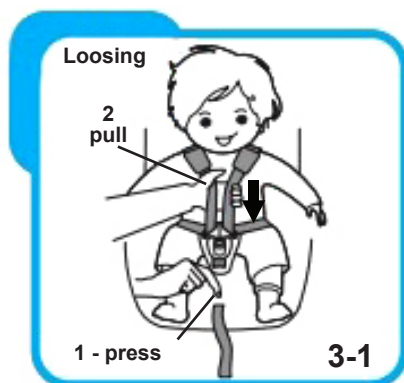
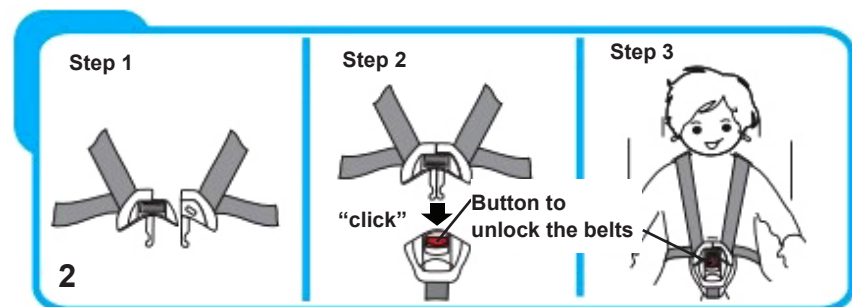
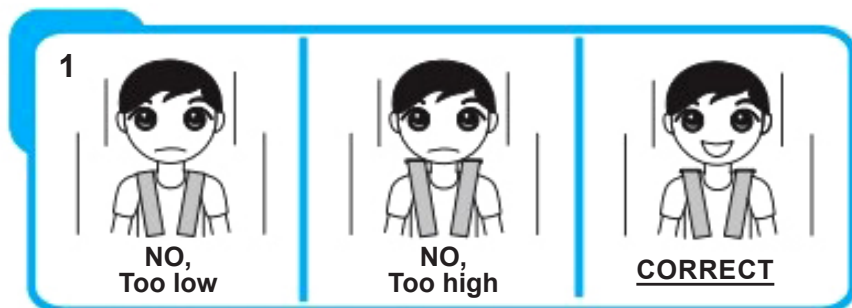
10-3 – Insert the diagonal belt through the head support guide. Insert the lap belt above the armrest and fasten the belt in the buckle. Pull the belt to make sure it is fixed. Make sure the 3-point vehicle belt is not twisted and is in correct position (**view 1 and view 2**).

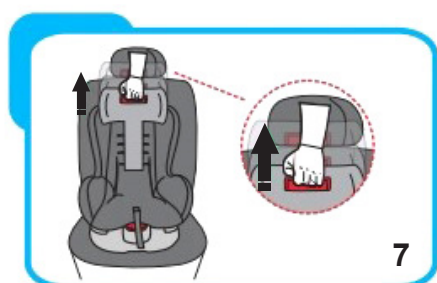
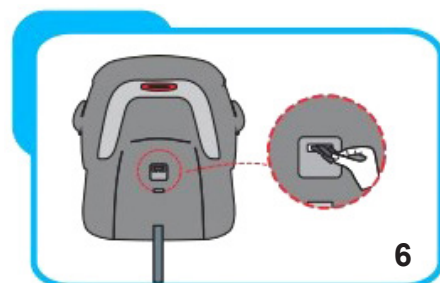
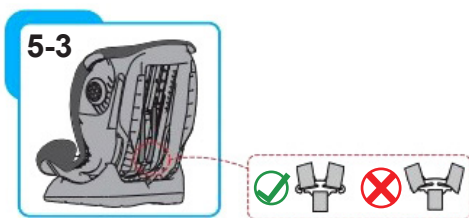
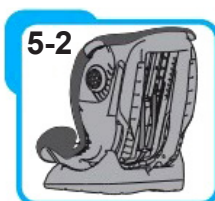
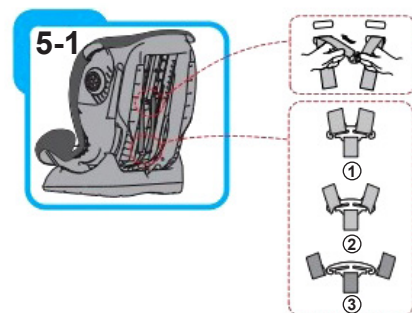
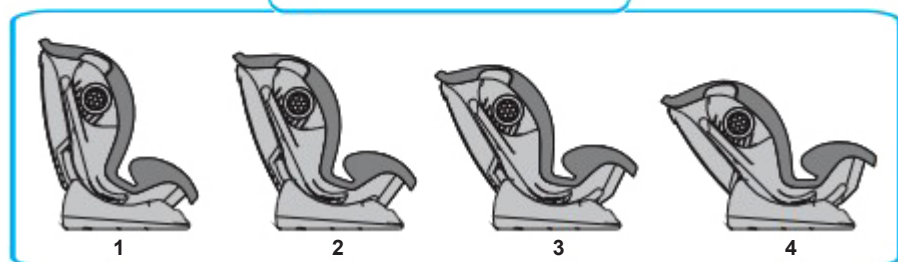
REMOVING AND PLACING THE UPHOLSTERY

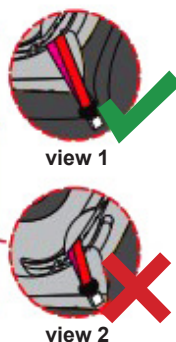
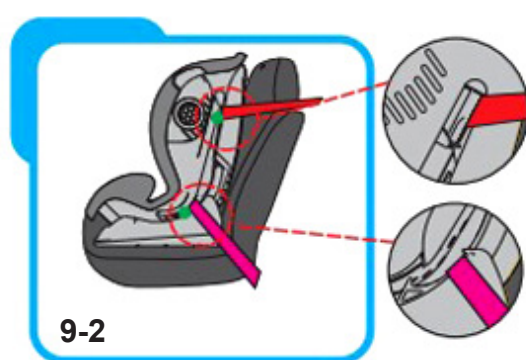
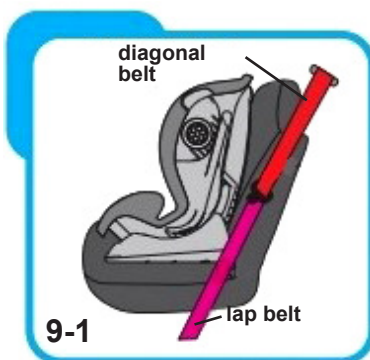
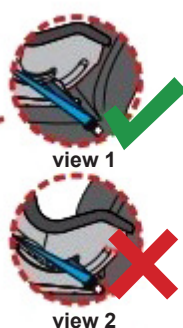
To remove the child car seat upholstery:

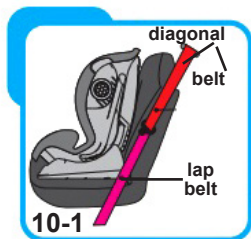
1. Remove the crotch belt and central buckle.
2. Remove the shoulder belts and soft pads.
3. Remove the upholstery.

To place back the upholstery, so the same in opposite order.









SIZES OF CAR SEAT



Depth: 505 mm
Width: 440 mm
Height: 610 mm

CLEANING AND MAINTENANCE INSTRUCTIONS

- ❖ Clean the fabrics, plastic parts and metal parts with a damp cotton cloth or a sponge and a mild soap.
- ❖ The soft pads may be hand washed at 30° C using a mild detergent!
- ❖ Do not bleach! Do not tumble dry! Do not dry in a machine! Do not iron!
- ❖ Do not use abrasive, bleach or other aggressive detergents.
- ❖ Always after cleaning leave the car seat fully dry and after that use it or store it.
- ❖ The harnesses must be cleaned with a damp cloth and a mild soap!
- ❖ Do not wet or remove the stickers! They contain important information!
- ❖ Always store your car seat indoors – on a dry and a clean place.
Do not expose to direct environment influence – sun, rain, moisture and high temperature intervals!
- ❖ Please, contact your authorized dealer for problems connected with the use of repair.

Fabric composing:

Outer: 100 % polyester

Filling: 100 % polyester



Used materials: metal, plastic, textile.



Bulgaria, Plovdiv, Str. Golyamokonarsko shosse No 1

www.chipolino.com