

IMPORTANT!
READ THIS MANUAL CAREFULLY AND KEEP IT FOR FUTURE REFERENCE

INSTRUCTION MANUAL FOR ELECTRICAL SWING „HUG”

HUG



This **chipolino** product is produced in conformity with the requirements of the Directives of the European Parliament and the Council 2001/95/EC General Product Safety and 2009/48/EC Toy Safety, EN 16232:2013+A1:2018 Child use and care articles. Infant Swings, Regulation for essential requirements and assessment of the compliance of toys, the European standards applicable to toys and the Consumer Protection Low from national legislation.

**TO SECURE SAFE USE OF THIS PRODUCT, FOLLOW THE WARNINGS,
GUIDELINES AND RECOMMENDATIONS FROM THE INSTRUCTION MANUAL:**

ATTENTION! WARNINGS!

- ❖ **CAUTION!** NEVER LEAVE THE CHILD UNATTENDED!
- ❖ **CAUTION!** STOP USING THE PRODUCT ONCE YOUR CHILD IS ABLE TO SIT UNAIDED OR WEIGHS MORE THAN 9 KG!
- ❖ **CAUTION!** THIS PRODUCT IS NOT INTENDED FOR LONG PERIODS OF USE AND SLEEP.
- ❖ **CAUTION!** NEVER LEAVE THIS PRODUCT ON ELEVATED, SLOPED OR SOFT SURFACES!
- ❖ **CAUTION!** ALWAYS USE THE SAFETY HARNESS!
- ❖ **CAUTION!** TO AVOID INJURY, MAKE SURE THAT THE CHILD IS AT SAFE DISTANCE WHILE MAKING ADJUSTMENTS, UNFOLDING, FOLDING AND STORING THE PRODUCT!
- ❖ **CAUTION!** DO NOT MOVE THE PRODUCT OR LIFT THE PRODUCT WHILE THERE IS A CHILD IN IT!
- ❖ **CAUTION!** DO NOT LIFT THE PRODUCT BY THE MOBILE TOY!
- ❖ **CAUTION!** DO NOT ALLOW CHILDREN PLAY WITH THIS PRODUCT!
- ❖ **CAUTION!** SET THE SOUND VOLUME LOW TO AVOID DAMAGE TO THE CHILD'S HEARING!
- ❖ **CAUTION!** KEEP AWAY FROM FIRE!
- ❖ Adult assembly required!
- ❖ Use for babies aged around up to 6 months with maximum weight 9 kg.
- ❖ **Do not** use the product for more than one child!
- ❖ The product is not a substitute for a cot or bed. If the child needs sleep, you must put it in a suitable bed or cot.
- ❖ **Do not** use the product if there are missing or damaged parts!
- ❖ **Do not** use spare parts or other components, which are not supplied by the producer! The producer revokes all responsibility in case you have used spare parts different from the approved type or from the recommended by the producer.
- ❖ **Do not** make changes or modifications to the structure! If necessary, contact the retailer or and authorized service for advice and repair.
- ❖ **Do not** tie strings or cords to the product to avoid risk of suffocation!
- ❖ Use the product only for its purpose.
- ❖ All settings regarding the power supply – turning on/off, replacing or charging of batteries to be done only by adult!
- ❖ Use only the AC/DC adaptor supplied by the producer.
- ❖ Regularly check the good working order of the AC/DC adaptor. Discontinue usage in case of damage.
- ❖ **Do not** allow presence of children under 3 years before assembly is complete to avoid their access to small or disassembled parts!
- ❖ Keep the nylon package away from children to avoid risk of suffocation!



IMPORTANT! WARNINGS AND GUIDELINES FOR USE OF BATTERIES

- ❖ Always secure the battery compartment cover after having inserted the batteries.
- ❖ Do not let children have access to the batteries or play with them!
- ❖ Insert batteries only of the designated type and voltage.
- ❖ Do not use batteries of different types.
- ❖ Do not mix used and new batteries.
- ❖ Follow the designated polarity in the battery compartment.
- ❖ Remove the damaged or worn out batteries.
- ❖ Remove the batteries when you are not using the product.
- ❖ Do not throw the batteries in open fire. Do not take the batteries to pieces.


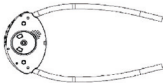
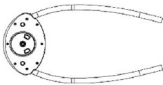

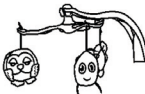
- ❖ **CAUTION!** Waste from exhausted or unusable batteries must be disposed of separately. Do not dispose of the batteries with your household waste. Throw out the batteries at the designated places.



PRODUCT FEATURES

- ❖ Intended for newborns and very little children aged between 0 and 6 months with maximum weight 9kg.;
- ❖ Safety harness;
- ❖ 2 positions backrest;
- ❖ Soft toys;
- ❖ **FUNCTIONS:**
 - 5 speeds of swinging
 - Swinging duration (5 minutes, 15 minutes, 30 minutes)
 - Melodies
- ❖ Power supply on the swing: 4 pieces batteries type AA/LR6/1.5V or via adaptor AC 100-240V 50/60Hz and DC 6V/1000mA.
- ❖ Battery for remote control: 1 pc size CR2025.

MAIN PARTS DIAGRAM

	Name	Number
	Front and rear support legs	2 pcs.
	Right swinging mechanism + control box	1 pc.
	Left swinging mechanism	1 pc.
	Seat with cover	1 pc.
	Mobile with toys	1 pc.
	Adaptor-1pc., instruction manual – 1 pc., cover – 6 pcs.	In separate bag

ASSEMBLY GUIDE

IMPORTANT! Follow exactly the guidelines and the sequence of steps for product assembly and use which you will find in the figures in this manual.

CAUTION! After completing each step, check that fixing is secure!

CAUTION! Fixing in certain position is most of the times accompanied with a click!

CAUTION! Make sure all pins have shown through the openings.

Tools needed: screwdriver, used to insert and remove batteries. To complete assembly of swing you do not need to use tools.

The assembly actions are numbered from 1 to 7. Use their descriptions below along with the illustration with the same number.

1 – ASSEMBLY OF LEFT AND RIGHT SWINGING MECHANISMS TO THE LEFT AND RIGHT SUPPORTS

2 – SEAT ASSEMBLY

Insert both endings of the seat into the axis of the swinging mechanisms. Fix with the button and cover. Make sure the seat is securely fixed as trying to pull the endings from the axis of swinging mechanisms.

3 – ATTACHING THE MOBILE TOY

After you fix the mobile toy, make sure it can spin.

4 – RESTRAINT SYSTEM (SAFETY HARNESS)

4-1 Securing the child with safety harness.

To unlock the harness press the central button of buckle.

4-2 Adjustment the length of harness.

Note: Adjust the belts so that they fit well the child and are not twisted.

CAUTION! Periodically check to ensure that the seat belt is securely attached to the stroller frame as well as securely fastened. The belts should not be worn or torn, and plastic buckles and fasteners must be sturdy, free of damage and secure.

5 – MOBILE TOY

Mobile toy can spin in direction shown on the figure. This makes easier placing and taking out the child from the swing.

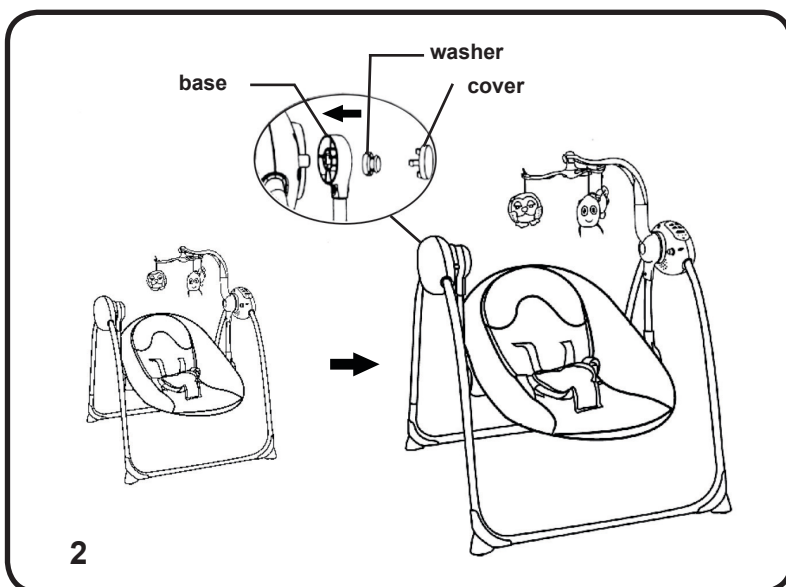
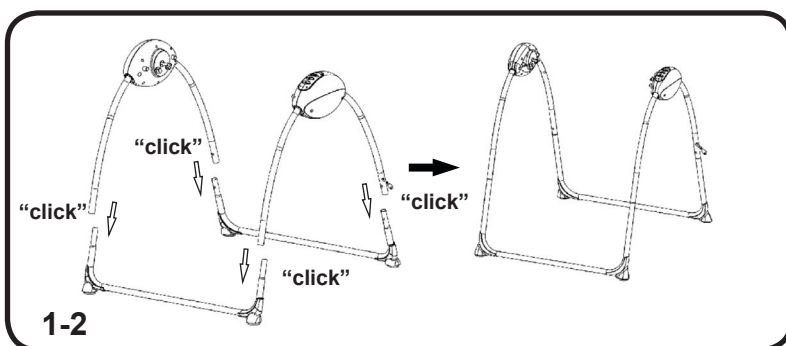
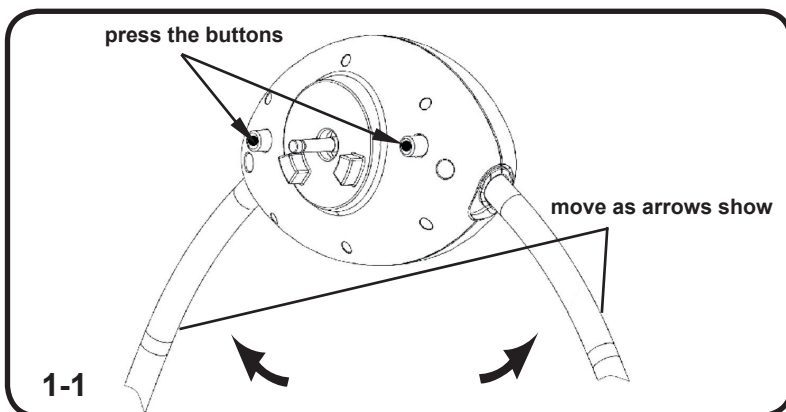
6 – BACKREST ADJUSTMENT

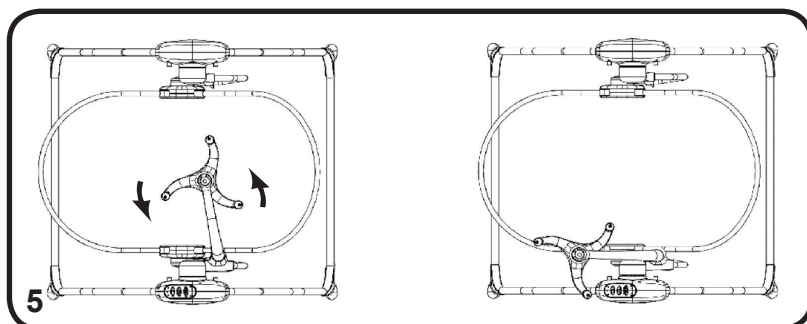
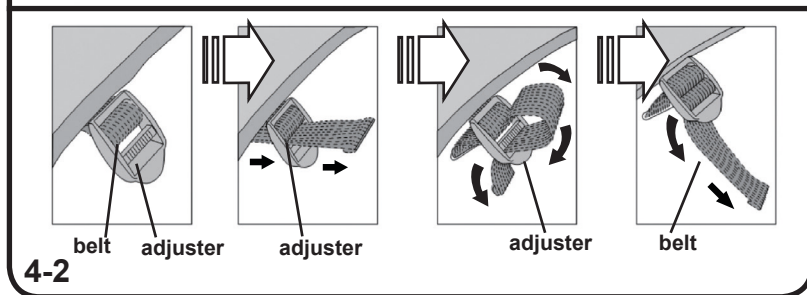
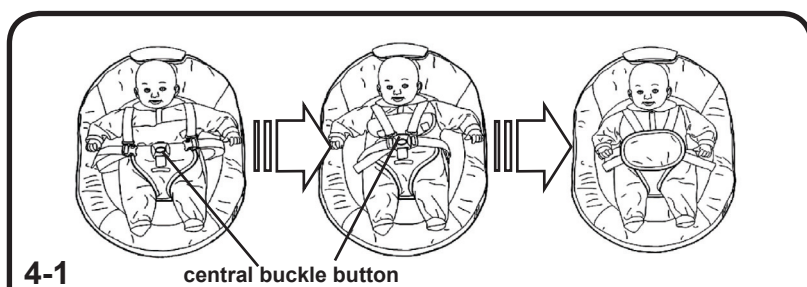
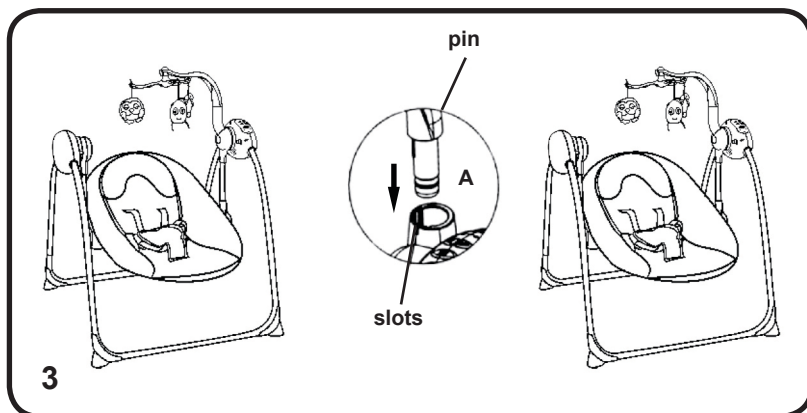
Pull the buttons and set the backrest upwards/downwards until you reach the required position.

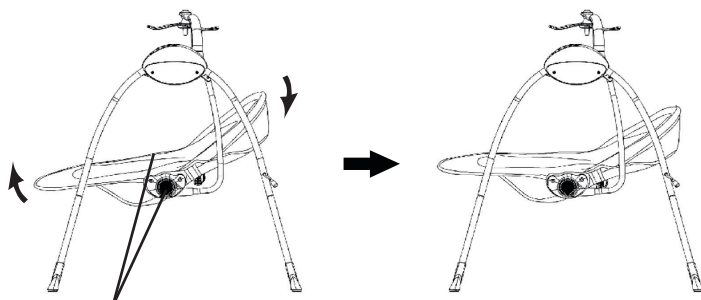
7 – SWING FOLDING

7a – Fold the swing;

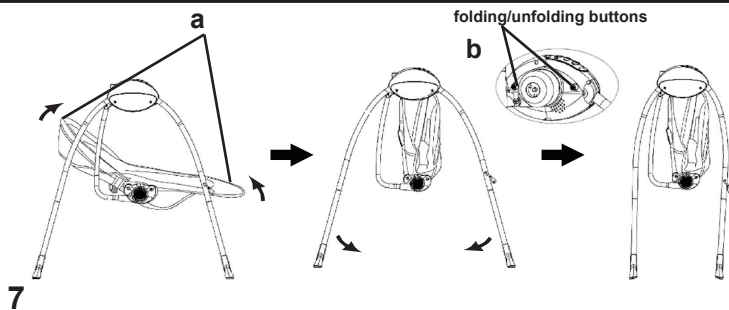
7b – Press the folding buttons and fold the tubes of both swinging mechanisms.





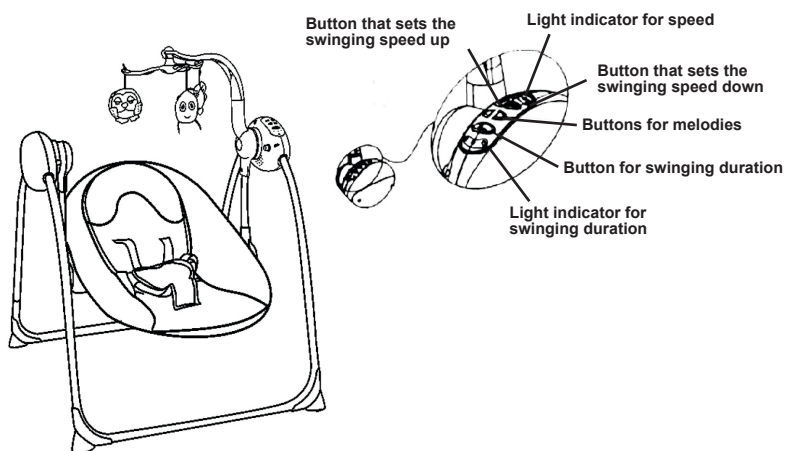


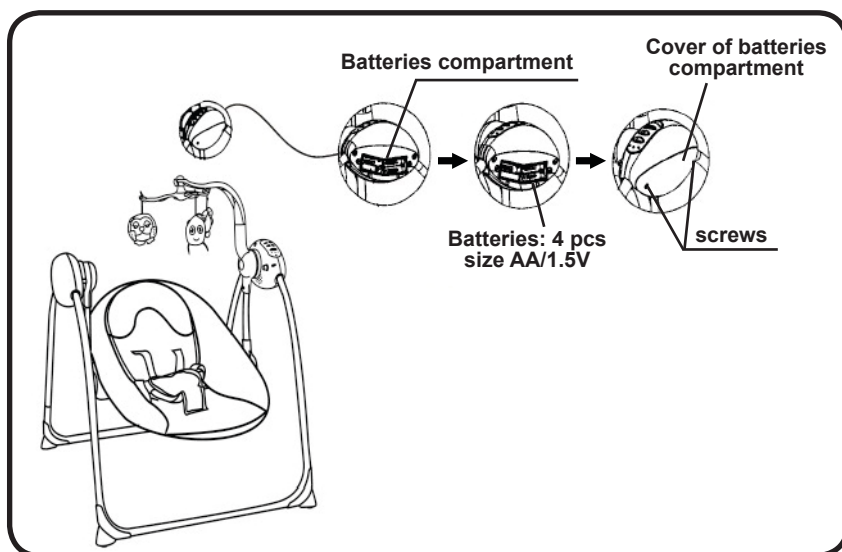
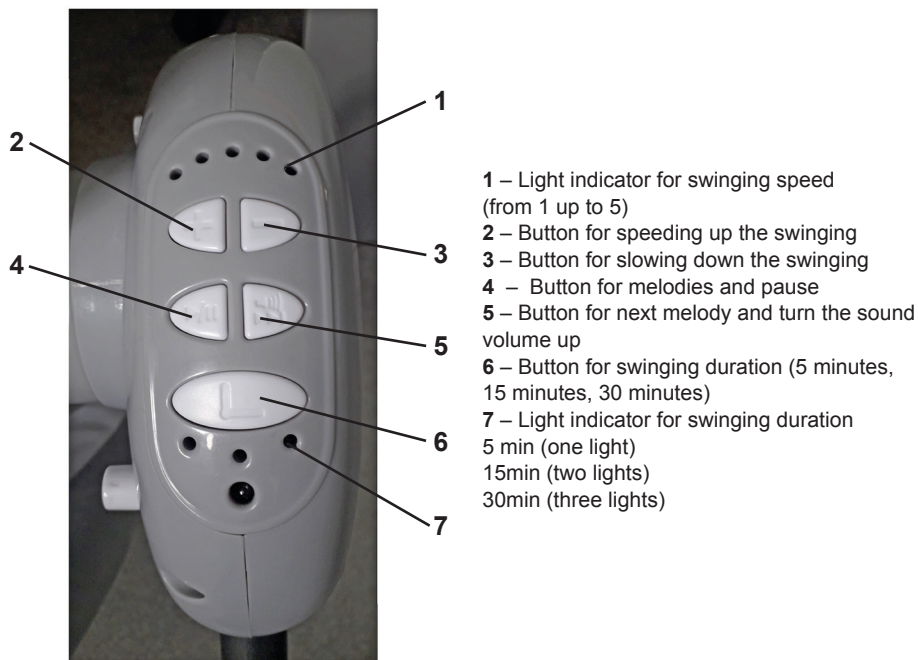
6 backrest adjustment buttons



7

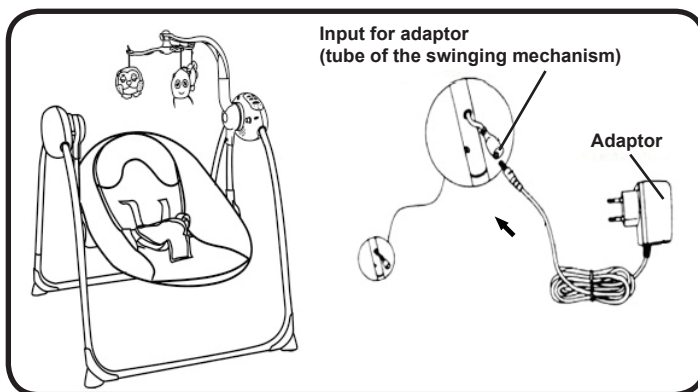
CONTROL BOX





Power supply with batteries. Installing the batteries

Remove batteries compartment with a screwdriver. Place 4 batteries size AA/1.5V (LR6), obeying the given polarity. Fix back the cover of batteries compartment.



Power supply with adaptor (Input for adaptor) - Input AC 100-240V - 50/60Hz and output DC 6V/1000mA.

Plug the adaptor tip into the input of control box and the adapter plug into the socket (230V).

REMOTE CONTROL

CAUTION! TO BE USED ONLY BY ADULT!

CAUTION! REMOTE CONTROL IS NOT A TOY!

	<p>OFF Button</p>	<p>Button for swinging duration: 5 min, 15min, 30min</p>
	<p>Button for melodies</p>	<p>Button for turning the volume up</p>
	<p>Button for turning the volume down</p>	<p>Button for: Play/ Pause</p>
	<p>Button for returning of the previous melody</p>	<p>Button for next melody</p>
		<p>1,2,3,4,5 – Buttons for speed of swinging (from 1 up to 5 speeds)</p> <p>Button STOP – stops the swinging</p>
	<p>1 pc battery size "button" CR2025 3V</p>	

CARE AND MAINTENANCE

- ❖ Clean the plastic and metal parts with slightly damp soft cloth with mild soap.
- ❖ Wash the fabric cover with hands at no more than 30°.
- ❖ Clean the arch with toys and toys with damp towel. Follow the guidelines from the label of each toy.
- ❖ Do not tumble or machine dry.
- ❖ Do not wet with water or other liquids the adaptor, control box or remote control. Before cleaning, remove the plug of the adaptor from the socket and turn off the power supply!
- ❖ Do not clean with abrasive detergents containing ammonia, bleach or spirit.
- ❖ When you store or transport the product, do not place items or objects in or on it because you may damage the structure, fabric cover or control box.
- ❖ Store the product in a clean and dry place. Do not subject to direct environmental influence – sun, rain, moisture or harsh temperature changes!

Fabric composition:

100% polyester



Materials used: textile, metal, plastic.

LSHHU02xxxx/ PD-A03



1 Golyamokonarsko shosse, Plovdiv, BULGARIA

www.chipolino.com