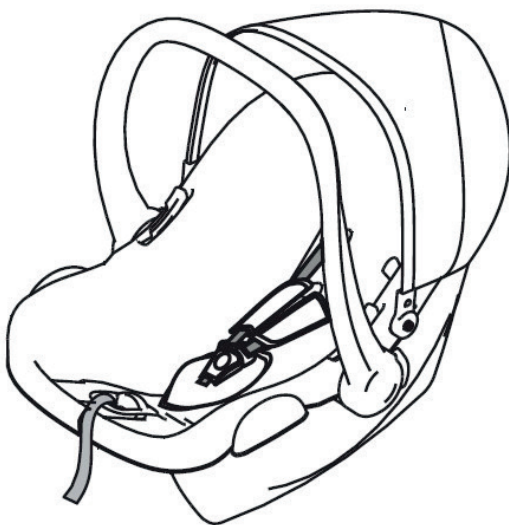


**IMPORTANT! KEEP THIS MANUAL FOR REFERENCE
DURING THE WHOLE TIME OF USE!**

**INSTRUCTION MANUAL
FOR USE OF CAR SEAT “DUO SMART”**

**DUO
SMART**



This child restraint **chipolino** is designed and manufactured in compliance with the requirements of Regulation 44 of the United Nations Economic Commission for Europe concerning the safe transportation of children, the provisions of the product safety directive 2001/95/EU of the European Parliament and The Council and Directive 91/671/EEC “Compulsory use of seat belts and child restraints systems for child occupants of power driven vehicles” of the European Parliament and The Council, as well as the Consumer Protection law and the national legislation.

Б Е Л Е Ж К А

ЗА ГРУПА 0+ (0-13kg)

1. Това е „УНИВЕРСАЛНА“ ИНТЕГРАЛНА СИСТЕМА ЗА ОБЕЗОПАСЯВАНЕ НА ДЕЦА. Тя е одобрена, съгласно Правило № 44, за обща употреба в превозни средства и е пригодима към повечето, но не всички, седалки за леки автомобили.
2. Може да се очаква, че по отношение на монтирането, системата ще съответства, ако производителят е заявил в инструкцията за експлоатация на превозното средство, че то е пригодено за монтиране на „универсална“ система за обезопасяване на деца от тази възрастова група.
3. Тази обезопасителна система за деца е класифицирана като „универсална“ при условия, по-стриктни от прилаганите за предишни модели, които не носят тази бележка.
4. В случай на съмнение, консултирайте се с производителя или търговеца на системата за обезопасяване.

NOTICE

FOR GROUP 0+ (0-13kg)

1. This is a “UNIVERSAL” INTEGRAL CHILD RESTRAINT SYSTEM. It is approved to Regulation No 44, for general use in vehicles and it will fit most, but not all, car seats.
2. A correct fit is likely if the vehicle manufacturer has declared in the vehicle handbook that the vehicle is capable of accepting a “Universal” child restraint for this age group.
3. This child restraint has been classified as “Universal” under more stringent conditions than those which applied to earlier designs which do not carry this notice.
4. If in doubt, consult either the child restraint manufacturer or the retailer.



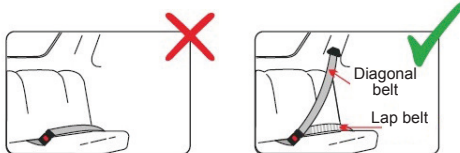
NO RESTRAINT SYSTEM CAN PROVIDE ABSOLUTE PROTECTION IN CASE OF A CRASH OR ROAD ACCIDENT

DRIVE WITH CARE WHEN THERE IS A CHILD IN YOUR VEHICLE!

IN ORDER TO ENSURE THE SAFETY OF YOUR CHILD FOLLOW EXACTLY THE INSTRUCTIONS AND SAFETY RECOMMENDATIONS IN THIS MANUAL!

SEAT PLACE IN THE CAR

This restraint system is suitable for used only in vehicles with approved lap/3-point/static/retractable safety belts approved to Regulation ECE R16 of UN ECE!



CORRECT/SUITABLE



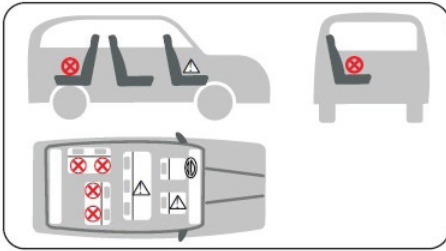
INCORRECT/ NOT SUITABLE



Never install the car seat on passenger seat equipped with airbag which cannot be deactivated! This could lead to serious injury or death!

Child car seat must be installed in car only in direction opposite to motion, so child is “rearwards facing”!

Do not install the child car seat on seat facing aside or backwards.



	Seat at back	Correct
	Front seat without air bag	Correct
	Middle seat at back equipped with 3-point belt	Correct
	Seat facing backwards	Incorrect
	Seat facing aside	Incorrect

- ❖ NEVER LEAVE THE CHILD IN THE CAR SEAT UNATTENDED!
- ❖ DO NOT INSTALL THE CAR SEAT IN A WAY DIFFERENT FROM THE ONE SHOWN IN THE INSTRUCTION. IT IS DANGEROUS TO USE BEARING CONTACT POINTS OTHER THAN THOSE DESCRIBED IN THIS MANUAL AND MARKED ON THE CAR SEAT!
- ❖ IT IS VERY IMPORTANT THAT THE LAP BELT IS LAYING LOW AND THE CHILD'S HIPS ARE SNUG!
- ❖ DO NOT MAKE CHANGES, ADDITIONS OR MODIFICATIONS ON THE CAR STRUCTURE WITHOUT THE APPROVAL OF THE NOTIFIED BODY! If necessary, contact the supplier or an authorized service center for advice or repair.
- ❖ IMPROPER USE OF THE CAR SEAT WILL CONTRIBUTE TO REDUCING ITS SAFETY AND SECURITY CAPABILITY! Failure to comply with the directions for use in this manual increases the risk of serious injury or death!
- ❖ KEEP AWAY FROM FIRE!
- ❖ Use this car seat for newborn babies and children up to 13 kg. (recommended age 0-15 months).
- ❖ This car seat must be installed and handled only by adult!
- ❖ Hard parts and the parts of the restraint system, made of plastic, must be located and installed so that when the vehicle is in normal operation, they cannot be trapped by a sliding seat or in vehicle door.
- ❖ The three-point belt for adults, which attaches the child seat to the vehicle seat, must be well stretched, not pinched by the door, wrapped on the seat or any other part of the vehicle. It should not rub against sharp edges or parts.
- ❖ The belts of the car seat should not be twisted, they should be properly fastened and adjusted to the child's body.
- ❖ The belts - of the car seat and the vehicle - should not be twisted, frayed or torn, latches and locks (buckles) must be in order. Make sure that they are firmly fixed.
- ❖ If you find uncertainty or failure in the structure, latches, straps or locking mechanisms, discontinue usage until removal of the damaged parts and replacement with new ones.
- ❖ If the car seat has been subject to destructive loads during violent impact or accident, replace it with new.
- ❖ Never use a second-hand car seat or second-hand spare parts! The car seat may have been in a violent impact or car crash.
- ❖ Do not use this car seat without its seat cover and do not replace it with a new one, unless supplied by the manufacturer.
- ❖ Do not use the car seat if the child's head is above the upper edge of the car seat!
- ❖ Any luggage or other items that are liable to cause injury in case of sudden stop, collision or accident when travelling must be removed or securely fastened to a safe distance from the car seat and child.

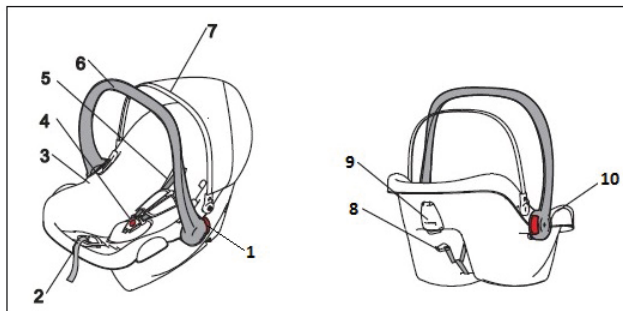
- ❖ Do not place additional pads in the car seat than those provided by the manufacturer!
- ❖ Do not use spare parts and other components not supplied by the manufacturer! The manufacturer takes no responsibility for safety in case spare parts are used other than the original.
- ❖ Do not expose this car seat to direct sunlight to avoid injuries of the child, deformation of the car seat and especially of the plastic parts.
- ❖ The car seat does not replace a carrycot or a bed. Should your child need to sleep, then he should be placed in a suitable cot or bed.
- ❖ Strings can cause strangulation! Do not place additional strings to the product to avoid injuries or strangulation!
- ❖ Do not place the car seat on soft surface like beds or sofas! The car seat may tip over and injure or suffocate your child!
- ❖ Do not allow children play with this product!
- ❖ The packaging of the product must be kept out of the reach of children to avoid the risk of strangulation!

MAIN FEATURES

- ❖ Suitable for babies aged 0+ months and weighing not more than 13 kg;
- ❖ Adjustable carry handle – 4 positions;
- ❖ 3 – point Y –shaped safety harness;
- ❖ Canopy;
- ❖ Belts adjustable in height;
- ❖ Additional supporting pads for new born baby.

IMPORTANT! The car seat can be installed on the frame of certain baby stroller. Compatibility between stroller and car seat is confirmed and explicitly declared by the stroller's manufacturer.

PARTS DIAGRAM



1. Handle position adjusting button	6. Handle
2. Belts tightening strap	7. Canopy
3. Fabric cover	8. Shoulder belts slots
4. Central buckle	9. Diagonal belt guide
5. Shoulder belt	10. Lap belt guide

CAUTION! ALWAYS CHECK THE STABLE FIXING OF THE SAFETY BELTS!

CAUTION! When using the car seat for a child younger than 7 months do not take out the additional seat pad – at this age the child needs additional support.

1 – ADJUSTING THE HEIGHT OF THE SHOULDER BELTS

The shoulder belts must be at the child's shoulder level in 2 positions.

ATTENTION! Before removing the safety belts from the slots, you have to loosen them (see article 2-2 (5))

IMPORTANT! Shoulder belts must be at the child's shoulders level (see figure)!

Take the shoulder belt out of the slot and thread it through the required slot. If the height is not appropriate, adjust again.

Note: Make sure that shoulder belts are threaded through the same height slots!

2 – SECURING THE CHILD IN THE CAR SEAT

2-1 – Unfastening of safety belt.

Press the central buckle button and split the shoulder belts.

2-2 – Lock the safety belt.

2-2 (3) - Make sure the safety belt is fastened by pulling the shoulder straps up.

ATTENTION! Shoulder belts must snug well the child and lab belt must lay low so the child's hips are snug!

2-2 (4) - Tightening the safety belt.

ATTENTION! Maximum distance between shoulder belts and child's body must be around 1.5-2 cm.

2-2 (5) Loosing the safety belt.

3 – INSTALLATION OF THE CAR SEAT INTO THE VEHICLE

3-1 – Place the child car seat on vehicle seat.

ATTENTION! Handle must be set in position shown in figure and car seat well snug into backrest of seat of the car!

3-2 Securing the car seat with diagonal belt of the vehicle.

Thread the diagonal belt of the vehicle through the diagonal belt guides on both sides of child car seat and buckle it in the vehicle belt buckle!

3-3 - Securing the car seat with lap belt of the vehicle.

3-4 - Tightening the 3-point car seat harness.

Child car seat must be installed in car only in direction opposite to motion, so child is "rearwards facing"!

CAUTION! The vehicle belt (lap and diagonal) must be well stretched and tight after the car seat is installed! Make sure the vehicle belt and buckle are not twisted and are in correct position.

To remove the car seat, perform the same actions in reverse order.

4 - HANDLE ADJUSTMENT - four positions (1, 2, 3, 4)

Note: To move the handle in desired position, press the two buttons simultaneously.

4– 1 Car seat installation in vehicle.

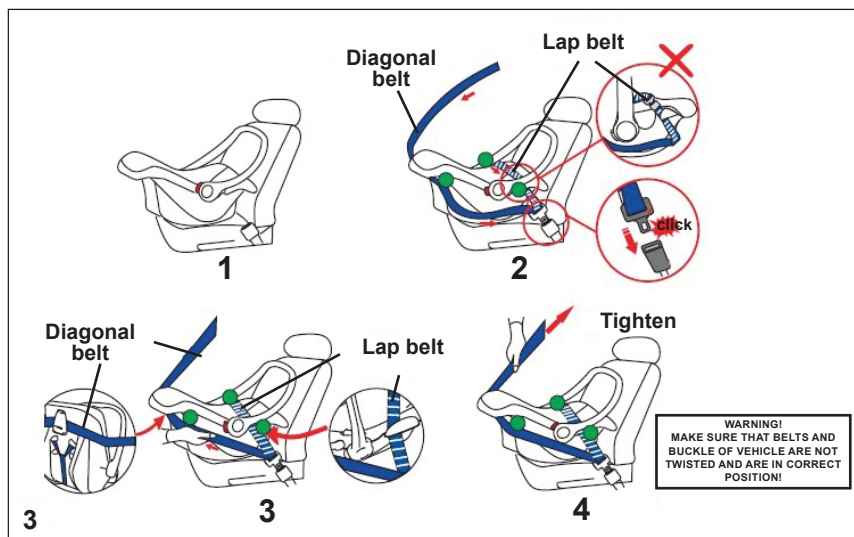
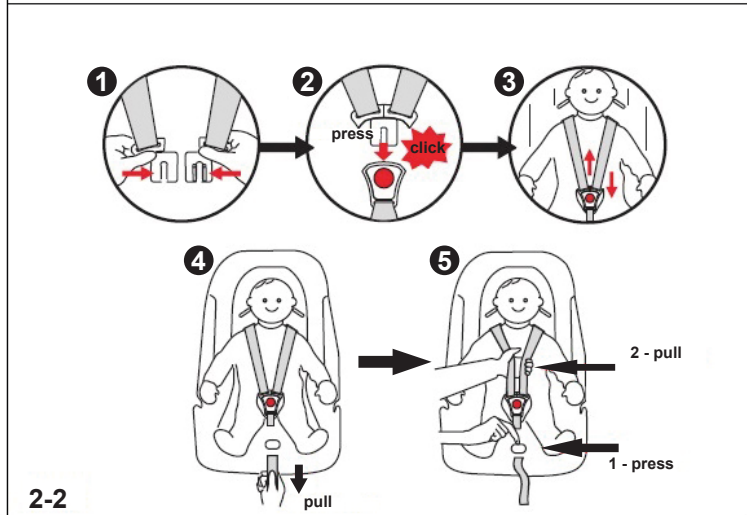
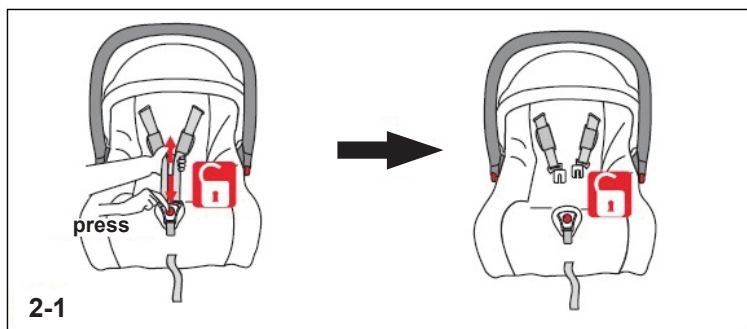
4-2 – For carrying the car seat.

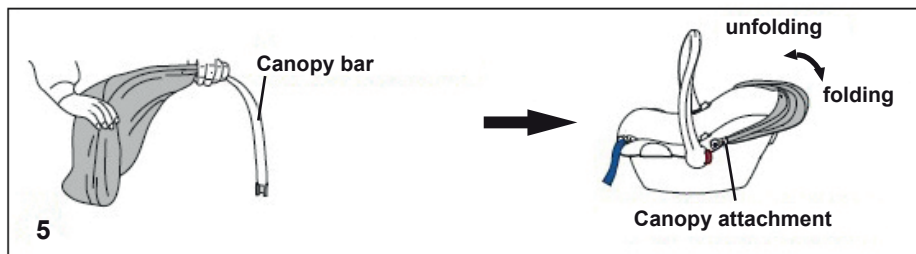
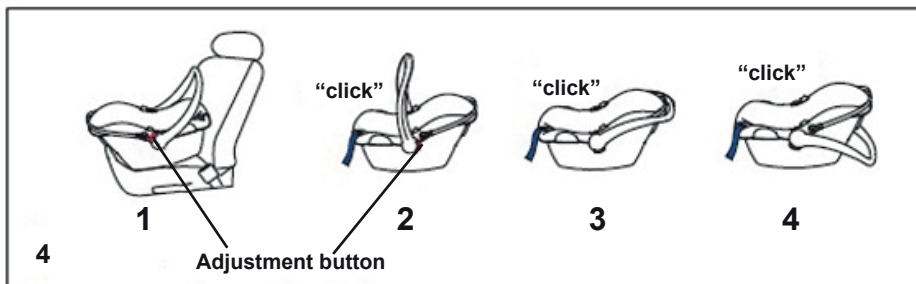
4-3 Rocking function.

4-4 Static car seat

5- CANOPY ATTACHMENT







CARE AND MAINTENANCE

- ❖ Clean the fabrics, plastic parts and metal parts with damp cotton cloth or sponge and mild soap.
- ❖ Fabric seat cover may be hand washed at 30°C!
- ❖ Do not bleach! Do not dry clean! Do not tumble dry! Do not iron!
- ❖ Do not use abrasive, bleach or other aggressive detergents.
- ❖ Always after cleaning leave the car seat fully dry and after that use it or store it. If you keep it moist, mold may appear to your car seat.
- ❖ Harnesses must be cleaned with damp cloth and mild soap!
- ❖ Do not wet or remove the stickers. They contain important information!
- ❖ Always store your car seat indoors – on dry and clean place. Do not expose to direct environment influence - sun, rain, moisture and high temperature intervals.
- ❖ Please, contact your authorized dealer for problems connected with the use or repair of this car seat.

Fabric content:

Shell: 100% polyester

Filling: 100% polyester



Materials used: plastic, textile, metal

STKDS021xxx



Bulgaria, Plovdiv, str. Golyamokonarskoshosse 1

www.chipolino.com