

### Repair and Maintenance

- 1) The product contains electronic components and must not be used in water or in a damp environment. Clean it with a piece of wet cloth.
- 2) The rotatable parts of baby cart should be often examined to see whether foreign matters hinder the rotation and keep a normal lubrication condition.

MADE IN CHINA

K07-SMS-160-002

002-01

## LAMBORGHINI CENTENARIO

Read Operation Instructions Carefully Before Use



The "Lamborghini" and "Lamborghini Bull and Shield" trademarks, copyrights, designs and models are used under license from Automobili Lamborghini S.p.A, Italy.

## Dimensions of entire car



Model:	Option A	
Push handle:	Yes	
Covering cloth:	NO	
IC music:	Yes	
PVC wheel sleeve:	Yes	

Model:	Option B	
Push handle:	Yes	
Covering cloth:	NO	
IC music:	Yes	
PVC wheel sleeve:	NO	

Model:	Option C	
Push handle:	Yes	
Covering cloth:	Yes	
IC music:	Yes	
PVC wheel sleeve:	Yes	

Model:	Option D	
Push handle:	Yes	
Covering cloth:	Yes	
IC music:	Yes	
PVC wheel sleeve:	NO	

## Contents

- I. Product Specifications and Parameters
- II. Components List
- III. Assembly Diagram
- IV. Installation and replacement of the batteries for steering wheel
- V. Function and Operation
- VI. Simple Fault Removal Guidance
- VII. Warning

## I. Product Specifications and Parameters

1. This product is suitable for the children of 2-6 years old, and shall be used under adult supervision!
2. Product dimensions: 71.8 × 46 × 100.7CM
3. Product maximum load weight: 23 kg
4. Product operating ambient temperature: 0-40 °C
5. Steering wheel power supply: 2 × 1.5V AA battery (excluded in this product)

## VI. Simple Fault Removal Guidance

Problems	Check
Music sound is distorted or silent	Check whether the battery power is enough, otherwise charge or replace it.

## VII. WARNING

### (1). BATTERY WARNING

1. Use 2 X 1.5V AA batteries (not included).
2. Pay attention to the +/-polarity.
3. Rechargeable batteries must be charged by an adult only.
4. Do not recharge batteries if they are not rechargeable.
5. Remove rechargeable batteries from steering wheel battery compartment before charging.
6. Do not mix new/old batteries.
7. Do not mix alkaline, standard (carbon-zinc) or rechargeable (nickel-cadmium) batteries.
8. Always remove the batteries from steering wheel battery compartment if it is not used for a long time.
9. Exhausted batteries are to be removed from the toy.
10. Different types of batteries are not to be mixed.
11. The supply terminals are not to be short-circuit.

### (2). PRODUCT WARNING

1. Product assembly should only be undertaken by a responsible adult.
2. This product can be disassembled and the small parts may be swallowed by small children. Children using this product must be under the supervision of an adult at all times.
3. This product must be thoroughly checked for safety before allowing a child to use it.
4. It is recommended that children always wear shoes and other protective clothing and equipment (e.g. helmet, gloves, kneepads etc.) during use.
5. This product must only be used on a flat level surface. Do not use it on a public road or near dangerous areas such as steps, uneven ground, water etc.
6. This car must only be used by a single child, maximum load 23kg.
7. Improper use may damage components.
8. The product packaging is not a toy and must be kept away from children. To avoid suffocation, remove all packaging material after product assembly.
9. These instructions contain important information, please retain them after product assembly.

### (3).WARNING



## WARNING

To reduce the risk of injury, adult supervision is required at all times. In the interests of safety, DO NOT use this product on public roads, near motor vehicles, uneven ground, swimming pools or where there is water. Product must only be used by one child at a time.



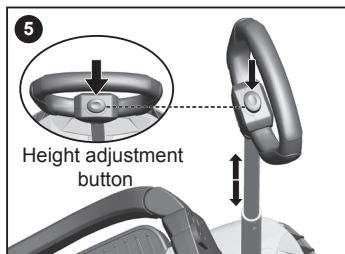
## WARNING

Protective clothing and equipment should always be worn when using this product.



## WARNING

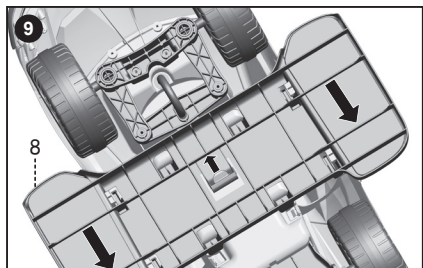
Please keep the product and all parts away from children before full assembly has been completed by a responsible adult. Unassembled product contains small parts and potentially harmful sharp edges.



Push the button on the top of the push handle to unlock, and shorten or stretch out the push handle. When you hear the sound "crack", the handle is locked in a new height.



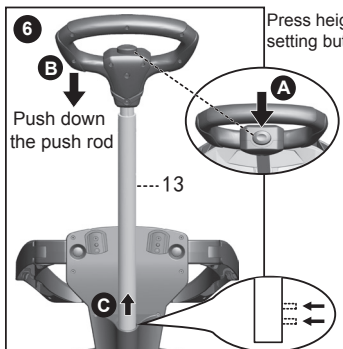
Push the button on the handrail guard to lift it and then open.



Push up the snap hook and push back the pedal to remove.

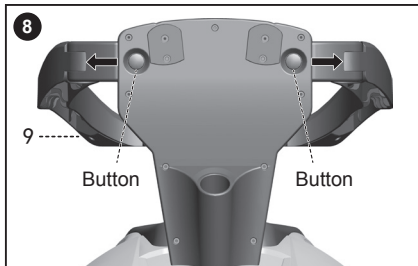


Children's cart



Press height setting button.

Remove the push handle and shorten it to the lowest level. Hold the lower end of the pipe of the push handle with left hand and hold the handle head with right hand. **A**. Press the handle button; **B**. Push hardly with right hand (now the two bumps on the bottom of the push handle are retracted and the handle is unlocked); **C**. Pull out the handle with left hand.



Press the button on the handrails and pull out, the handrails can be removed.



(Optional A,Optional B) Walker: Disassemble the push handle (part 13) and handrail guard (part 9) and pedal (part 8) according to the steps 5, 6, 7, 8, 9 to change it to a walker, as shown in the figure. Children may move forward with his feet.

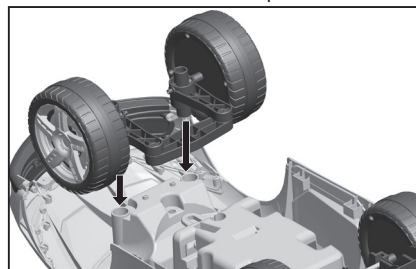
(Optional C,Optional D) Walker: As shown in Figure 4. Disassemble the ceiling, and then disassemble the push handle (part 13) and handrail guard (part 9) and pedal (part 8) according to the steps 5, 6, 7, 8, 9 to change it to a walker, as shown in the figure. Children may move forward with his feet.

## II. Components List

1. Cart Body	7. J-shaped stick	13. Push handle
2. Steering Wheel	8. Foot treadle	14. Canopy (Optional C,Optional D)
3.Accessories for the steering wheel	9. Handrails and protective railing	15. Canopy iron rack (Optional C,Optional D)
4. Backrest	10. Steering wheel screw 5 × 23PM	16. Bottom cover for fixing block of canopy rack (Optional C, Optional D)
5. Front wheel assembly	11. Steering wheel locknut (5MM)	17. Bottom cover for fixing block of canopy rack Screw 3.5 × 12BAB 6PCS (Optional C,Optional D)
6. "┐"-shaped frame	12. Screw 4 × 20BAB 2PCS	18. PVC wheel 4PCS (Optional A, Optional C)

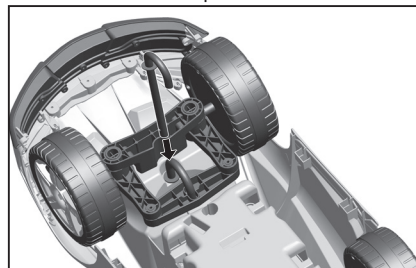
## III. Assembly Diagram

1. Mount the front wheel components



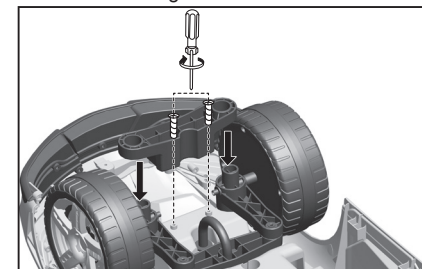
Turn over the cart body, and insert the Front wheel assembly into the designated location of the cart bottom.

3. Installation of J-shaped stick



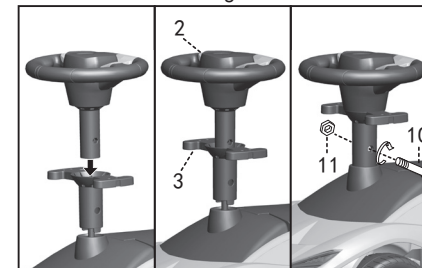
Install the J-shaped stick at the assigned location.

2. Mount the flange-mount.



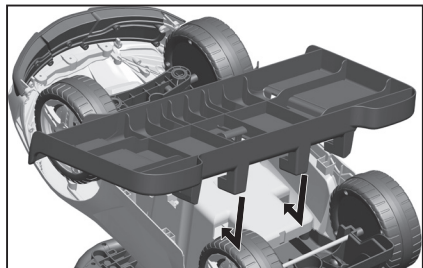
Insert the flange-mount into the designated position on the front wheel along the arrow direction and tighten it with screws (part 12).

4. Installation of steering wheel



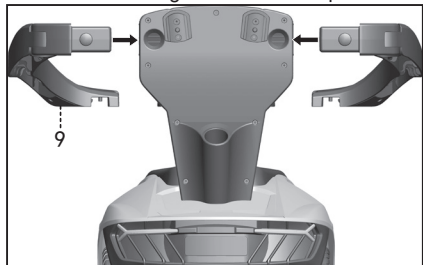
Insert the J-shaped hooks to steering wheel (part 2) and accessories of the steering wheel (part 3) in sequence and tighten them with the screws (part 10) and the lock screw cap (part 11).

#### 5. Mount the Foot treadle



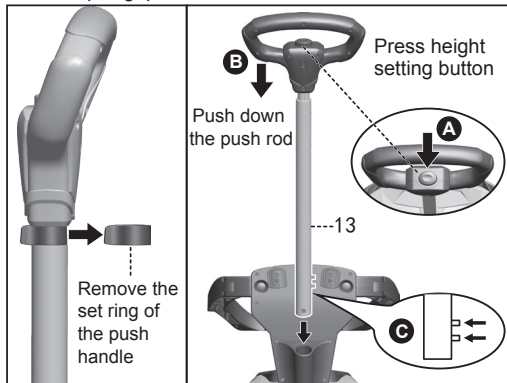
Align the snap lock of the pedal with the designated position on the bottom of the cart, push in along the arrow direction and lock.

#### 7. Install left and right handrails and protective railing



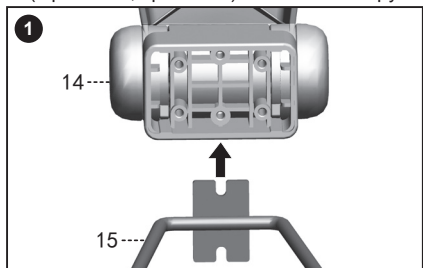
Push the button on handrails and protective railing, fixing left and right handrails and protective railing (part 9) into the designated position at the two ends of the backrest, and lift the other end of the handrails to the designated position of the steering wheel.

#### 8. Install pull grip



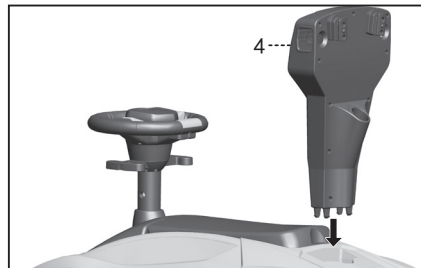
The installation personnel should stand at the rear of the children's cart, align with the direction of the bumps on the bottom of the push handle, as shown in the figure. Hold the lower end of the pipe of the push handle with left hand and hold the push handle head with right hand. **A**. Press the handle button; **B**. Push it hardly with right hand; **C**. Now the two bumps on the bottom of the push handle are completed retracted and insert the push handle into the bottom of the installation hold at the rear of the cart. When hearing the sound "crack", turn the handle to control the turning direction of the front wheel.

#### 9. (Optional C,Optional D) Install the canopy iron rack

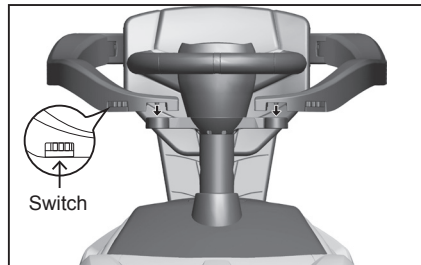


Place the canopy ironrack (part 15) into the bottom of the canopy (part 14), as shown in Figure 1. Align the holes, as shown in Figure 2. Tighten the bottom cover screws for the fixing block of the canopy rack(part 17).

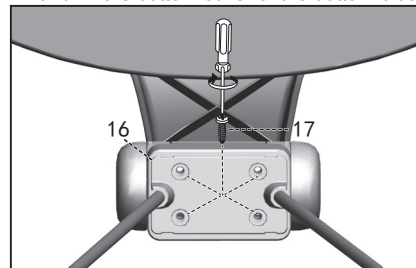
#### 6. Install backrest



Insert the back rest (part 4) to the designated position on the rear-upper end of the cart.

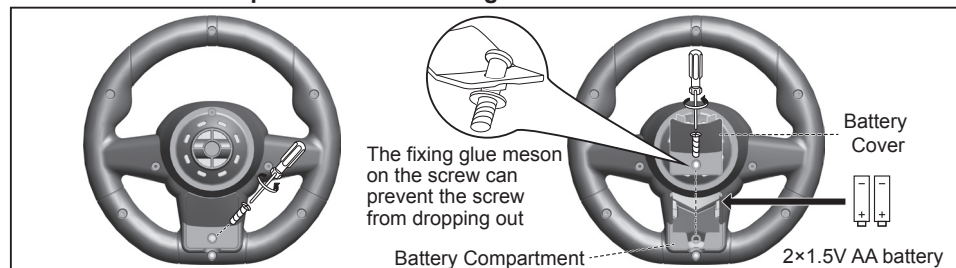


#### 10. (Optional C,Optional D) Install the ceiling bracket and fix the bottom cover of the bottom block.



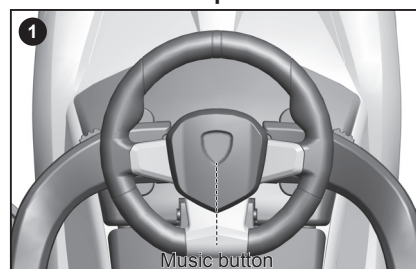
Close the bottom cover of the fixing block of the ceiling bracket (part 16) and then tighten with the screws (part 17).

#### IV. Installation and replacement of steering wheel batteries



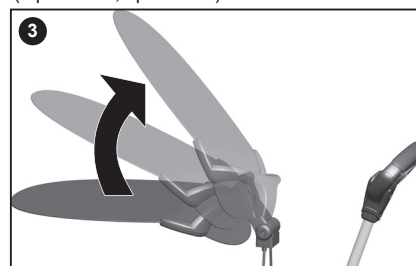
The battery box is on the bottom of the steering wheel. Put the steering wheel upside down, open the battery cover on the steering wheel, replace the batteries, and take out the used batteries. Install 2 AA batteries by aligning with the positive and negative poles of the batteries, close the battery cover and tighten the screws.

#### V. Function and Operation



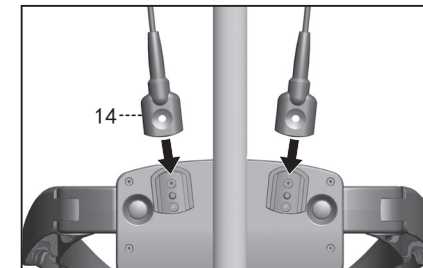
Press the music button on the steering wheel to play six pieces of music, press it once to play a piece of music and the six pieces of music can be played in sequence.

(Optional C,Optional D)

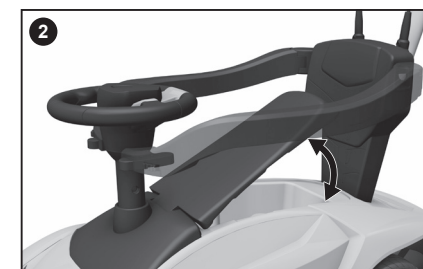


The angle of the ceiling can be adjusted.

#### 11. (Optional C,Optional D) Install canopy

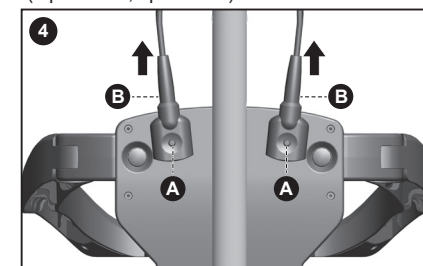


Insert the canopy (part 14) into the designated position, as shown in the figure.



There is a large space under the seat and some items can be placed inside. The kids can exercise their abilities of sorting and storing.

(Optional C,Optional D)



**A** Press the dot on the both ends.  
**B** Push up the ceiling to remove it.