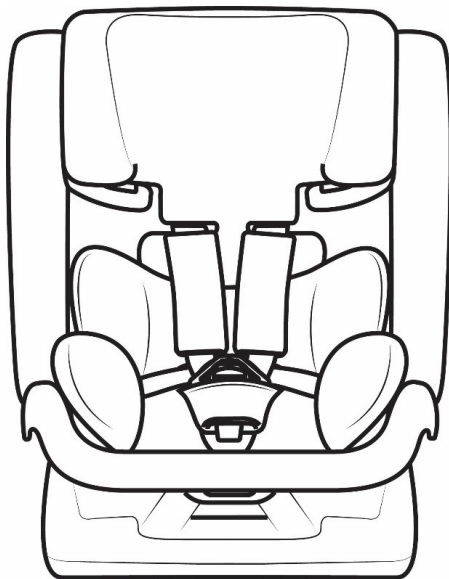


IMPORTANT! KEEP THIS MANUAL FOR FUTURE REFERENCE!

**INSTRUCTION MANUAL FOR
USE OF CHILD RESTRAINT SYSTEM
„PASEO”**

PASEO



This child restraint system **chipolino** is designed and manufactured in compliance with the requirements of Regulation 44 of the United Nations Economic Commission for Europe concerning the safe transportation of children, the provisions of the Product safety Directive 2001/95/EU of the European Parliament and The Council, Directive 91/671/ EEC relating to compulsory use of safety belts in vehicles as well as the Consumer Protection Law from National Legislation.

NOTICE
GROUPS 0+, I , II and III

1. This is a "UNIVERSAL" CHILD RESTRAINT. It is approved to Regulation No 44, 04 series of amendments, for general use in vehicles and it will fit most, but not all, car seats.
2. A correct fit is likely if the vehicle manufacturer has declared in the vehicle handbook that the vehicle is capable of accepting a "universal" child restraint for these age groups.
3. This child restraint has been classified as "universal" under more stringent conditions than those which applied to earlier designs which do not carry this notice.
4. If in doubt, consult either the child restraint manufacturer or the retailer.



DO NOT FORGET THAT NO RESTRAINT SYSTEM CAN PROVIDE ABSOLUTE PROTECTION IN CASE OF A CRASH OR ROAD ACCIDENT! DRIVE WITH CARE WHEN THERE IS A CHILD IN YOUR VEHICLE!

IN ORDER TO ENSURE THE SAFETY OF YOUR CHILD, FOLLOW EXACTLY THE INSTRUCTIONS AND SAFETY RECOMMENDATIONS IN THIS MANUAL!

MISUSE OF THE CAR SEAT WILL CONTRIBUTE TO REDUCING ITS SECURITY AND SAFETY FEATURES! FAILURE OF THE GUIDELINES OF THIS INSTRUCTION INCREASES THE RISK OF SERIOUS INJURY OR DEATH!

PLACE IN THE CAR

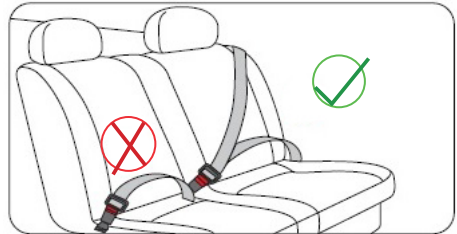
TO BE USED ONLY IN VEHICLES FITTED WITH APPROVED LAP / 3 POINT / STATIC / WITH RETRACTOR SAFETY-BELTS APPROVED TO UN/ECE REGULATION No. 16 AND ACCORDING NATIONAL LEGISLATION!



CORRECT/ SUITABLE



INCORRECT/ NOT SUITABLE



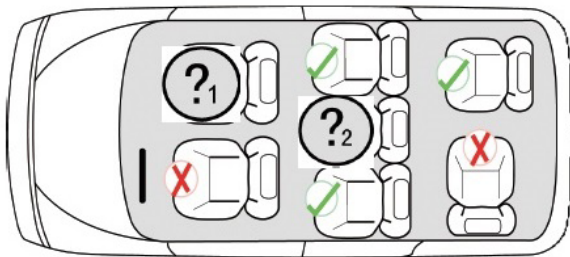
CAUTION!

NEVER INSTALL THE CAR SEAT IN FORWARD FACING POSITION BEFORE THE CHILD'S WEIGHT EXCEEDS 9 kg!



Do not place the restraint system FORWARD facing on a vehicle seat equipped with air bag that cannot be deactivated! This may result in death or serious injury!

Review the instructions of the vehicle for information about airbags and conditions of transportation of children.



Do not install the car seat FORWARD facing on a vehicle seat equipped with air bag that cannot be deactivated!



To be used only on vehicle seats with lap and diagonal belt.

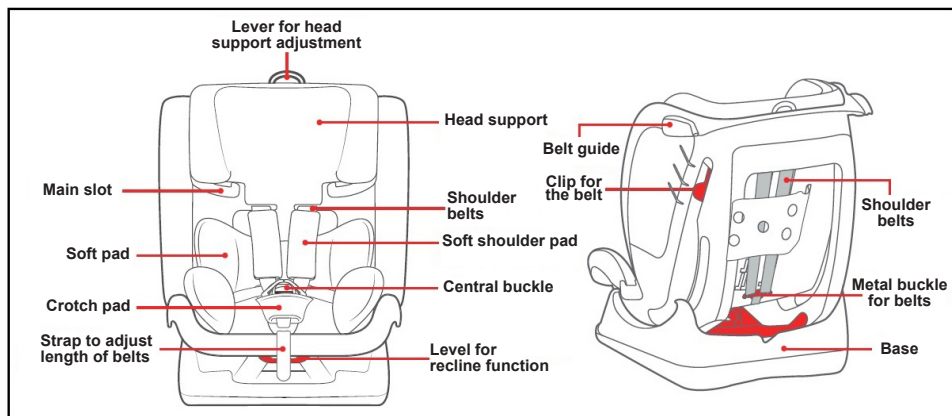
- ❖ **CAUTION! NEVER LEAVE YOUR CHILD UNATTENDED!**
- ❖ **CAUTION! DO NOT USE ANCHOR POINTS OTHER THAN THE ONES DESCRIBED IN THIS MANUAL AND MARKED ON THE RESTRAINT SYSTEM.**
- ❖ **CAUTION! THE CAR SEAT SAFETY BELTS MUST BE PROPERLY ADJUSTED ACCORDING TO CHILD'S HEIGHT, NOT TWISTED AND SNUG WELL AGAINST BABY'S BODY.**
- ❖ **CAUTION! THIS CHILD RESTRAINT SHOULD NOT BE MODIFIED OR ADAPTED WITH NEW FITTINGS, WITHOUT PREVIOUS AUTHORIZATION BY THE COMPETENT AUTHORITY.**
- ❖ **CAUTION! KEEP AWAY FROM FIRE!**
- ❖ Do not remove stickers and warnings on the car seat! They are important for everybody, who uses this car seat!
- ❖ Installation in the vehicle and securing the child in the car seat to be done only by adult!
- ❖ The rigid items and plastic parts of a child restraint shall be so located and installed that they are not liable, during everyday use of the vehicle, to become trapped by a movable seat or in a door of the vehicle.
- ❖ The vehicle safety-belt must be tightened and fastened, not pinched in the door, twisted on the seat or other part of the vehicle, or to rub against sharp edges or parts.
- ❖ The car seat safety belt must be well snug and fixed and adjusted according to child's size.
- ❖ Do not allow the car seat safety-belts and the vehicle safety-belts to be twisted, frayed or torn, the latches and the locks (the buckles) must be always in good order and firmly fixed.
- ❖ If you find uncertainty or defect in the construction, latches straps or locking mechanisms of the car seat, discontinue usage until removal of the damaged parts and replacement with new ones.
- ❖ The car seat should be changed when it has been subject to violent stresses in an accident.
- ❖ Never use a second hand child restraint. It may have suffered structural damage which may make the child restraint extremely dangerous.
- ❖ The child restraint shall not be used without the cover! The seat cover should not be replaced with any other than the one recommended by the manufacturer, because the cover constitutes an integral part of the restraint performance.
- ❖ Any luggage or other objects liable to cause injuries in the event of a collision shall be properly secured.
- ❖ Do not put any additional pads except the ones supplied from the manufacturer! Placing additional pads may obscure the safety of your child!
- ❖ Do not use spare parts and other components not supplied by the manufacturer. The manufacturer assumes no responsibility for safety in the event that is used spare parts other than original.
- ❖ The car seat should be kept away from sunlight to prevent the child from burning and any deformation of the seat, especially of the plastic parts.

- ❖ The car seat does not replace the child's cot or bed. When a child needs a sleep, you have to place him in a suitable baby stroller, baby crib or bed.
- ❖ Do not attach additional cords and strings on the car seat to avoid the risk of suffocation!
- ❖ Never place the child seat on beds, couches or similar soft surfaces!
- ❖ Do not allow children to play with the product!
- ❖ Keep the plastic bag away from babies and children to avoid danger of suffocation!

PRODUCT FEATURES

- ❖ A Child Restraint System designed for children weighing from 0 to 36 kg, mass groups:
 - 0+** : 0-13 kg (from birth up to 18 months),
 - I** : 9-18 kg (from 9 months up to 4 years),
 - II** : 15-25 kg (from 3 years up to 7 years),
 - III** : 22-36 kg (from 6 years up to 12 years);
- ❖ Car seat must be installed in a REARWARD facing position for mass groups 0+ and I;
- ❖ Car seat must be installed in a FORWARD facing position for mass groups II and III;
- ❖ 5-points safety-belt;
- ❖ The headrest height can be adjusted;

MAIN PARTS DIAGRAM



IMPORTANT!

- Follow exactly the instructions and the sequence for installing and using the product from the text and illustrations enclosed in the manual.
- Check the security of fixing after each operation!
- **ALWAYS CHECK THE SECURITY OF FIXING OF THE SAFETY-BELTS!**

1 – CORRECT HEIGHT OF THE SHOULDER BELTS

IMPORTANT! The shoulder belts must be at child's shoulders level.

2 – SECURING THE CHILD WITH CAR SEAT 5-POINT SAFETY BELT

Note: Make sure that safety belt is locked as pulling the shoulder belts upwards. To unlock the safety belt press the button at central buckle and split the belts.

3 – LENGTH ADJUSTMENT OF SAFETY BELTS (LOOSENING AND TIGHTENING)

3-1 Tightening

3-2 Loosening

Note: Pull the shoulder belts, not the soft shoulder pads!

4 – HEAD SUPPORT ADJUSTMENT

Pull the lever for head support adjustment and set the head support downwards or upwards.

Make sure that head support is in correct position!

5 – RECLINING

Car seat has 4 recline positions.

Position **"R"** – to be used only when car seat is installed **"REARWARD"** facing, mass groups 0+ and I.

Position **"1, 2, 3"** – to be used only when car seat is installed **"FORWARD"** facing, mass groups I, II and III.

Pull the lever for recline function and set the car seat in required position.

IMPORTANT! Make sure that car seat is fixed in required recline position.

6 – REMOVING THE SHOULDER BELTS FROM METAL BUCKLE

7 – REMOVING THE SHOULDER BELTS FROM CAR SEAT

Loosen the fabric cover and set the head support to highest position. Pull the shoulder belts from the slot at head support.

8 – REMOVING THE CROTCH BELT AND SOFT PAD

Adjust the recline at position **"R"**. Rotate the locking buckle and thread it through the opening at the bottom of car seat. Remove the crotch belt and soft pad.

INSTALLATION OF CAR SEAT AND SECURING THE CHILD WITH WEIGHT FROM 0 UP TO 18 KG GROUPS 0+ (0-13 kg) and I (9-18 kg)

Car seat position **"REARWARD"** FACING

Car seat must be installed on the vehicle seat with 3-point vehicle belt.

9-1 – Pull the lever and set the recline of car seat in position **"R"**.

Note: Seat must be maximum reclined when installing the car seat in position **REARWARD** facing.

9-2 – Place the car seat on the vehicle seat in **REARWARD** facing position and make sure it snug well the vehicle seat backrest.

9-3 – Thread the diagonal belt of vehicle seat through the belt guide and clip for the belt at one side. After that thread the lap belt above the base of car seat.

9-4 – Insert the vehicle belt ending into the buckle at vehicle seat until you hear a click sound.

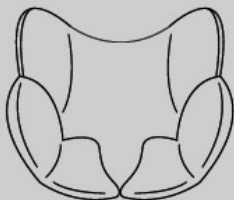
Note: Make sure that vehicle seat buckle is securely fixed as trying to pull the belt upwards.

9-5 – Place the child in car seat. Make sure that shoulder belts are at correct height and lock the car seat 5-point safety belt. Make sure belts are not twisted.

INSTALLATION OF CAR SEAT AND SECURING THE CHILD WITH WEIGHT FROM 9 UP TO 18 KG GROUP I (9-18 kg) Car seat position „FORWARD” FACING



IMPORTANT!



**When the weight of the child exceeds 13 kg.,
remove the soft pad**



**Triangle pillow
(only for newborn babies)**

Car seat must be installed on the vehicle seat with 3-point vehicle belt.

10-1 – Place the car seat on the vehicle seat in FORWARD facing position and make sure it snug well the vehicle seat backrest.

10-2 – Clip the diagonal belt of vehicle belt into the belt guide. Thread the lap belt through both guides at the base of car seat.

10-3 – Insert the vehicle belt ending into the buckle at vehicle seat until you hear a click sound.

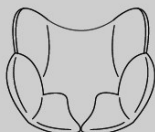
Note: Make sure that vehicle seat buckle is securely fixed as trying to pull the belt upwards.

10-4 – Place the child in car seat. Make sure that shoulder belts are at correct height and lock the car seat 5-point safety belt. Make sure belts are not twisted.

INSTALLATION OF CAR SEAT AND SECURING THE CHILD WITH WEIGHT FROM 15 UP TO 36 KG GROUP II (15-25kg) and GROUP III (22-36 kg) INSTALLATION OF CAR SEAT AND SECURING THE CHILD Car seat position „FORWARD” FACING



IMPORTANT! Please, remove:



soft pad



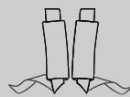
**triangle
pillow**



crotch pad



**central
buckle**



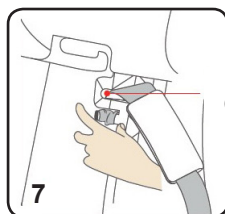
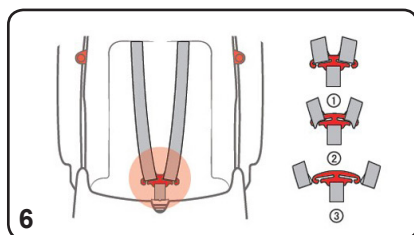
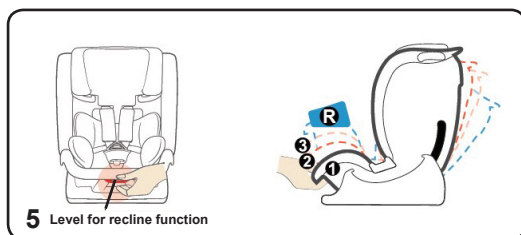
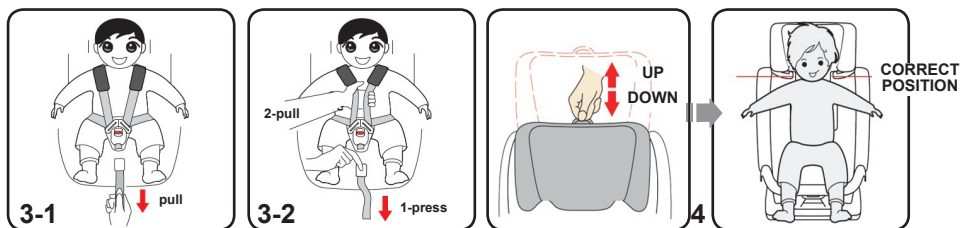
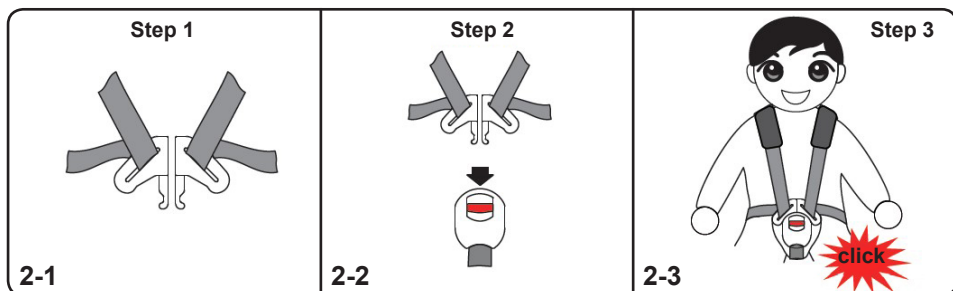
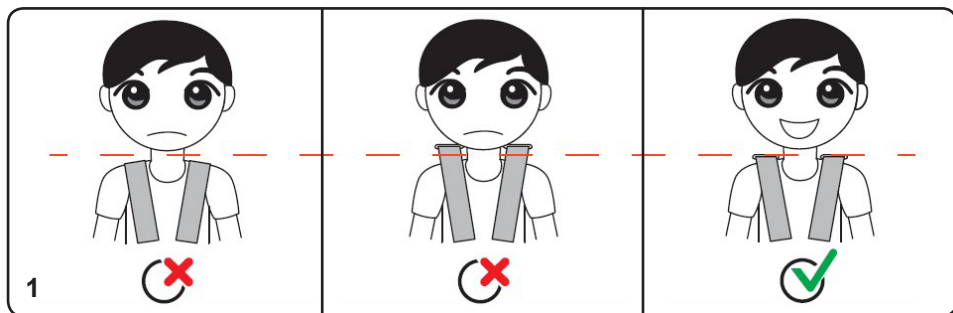
**shoulder belts and
soft shoulder pads**

Car seat must be installed on the vehicle seat with 3-point vehicle belt.

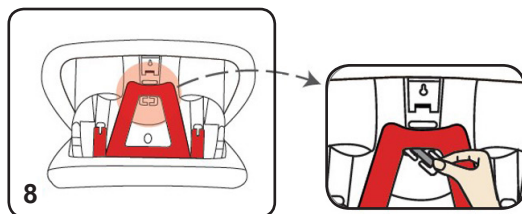
11 – Place the child in car seat and adjust the head support. Make sure it is in correct position and well fixed. Thread the vehicle belt around the body of child through the main slot for lap belt and main slot for diagonal belt as figure shows.

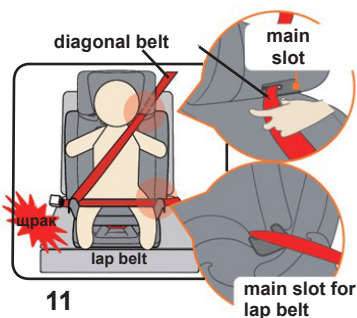
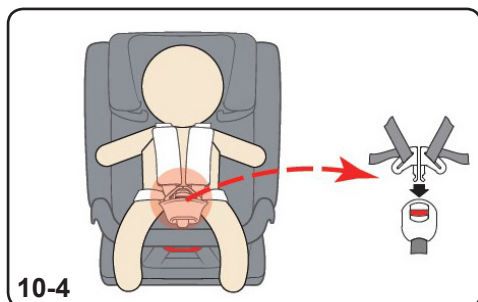
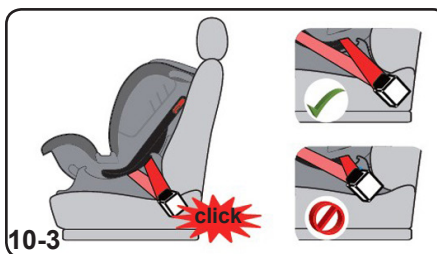
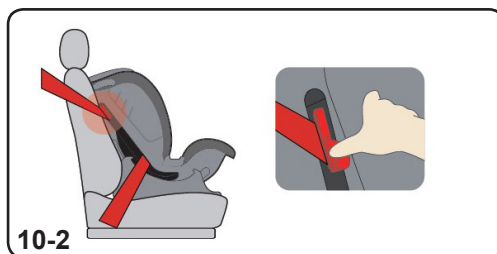
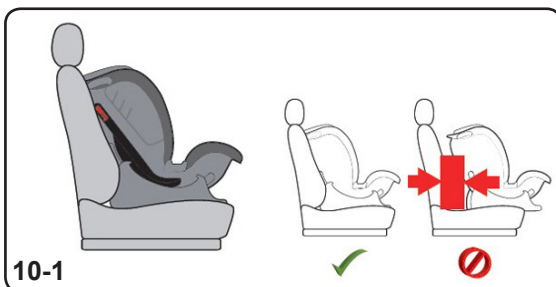
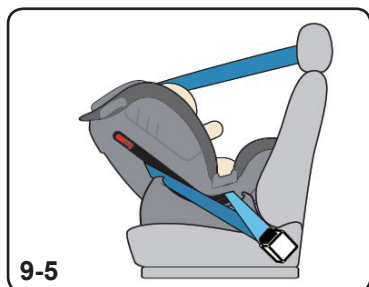
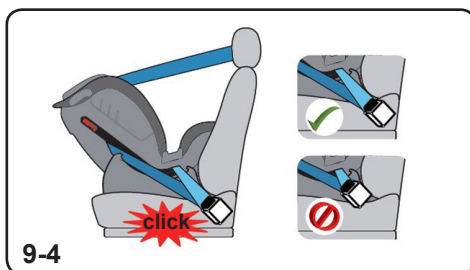
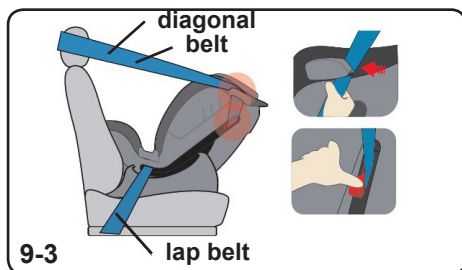
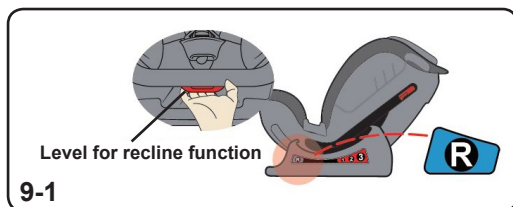
Insert the vehicle belt ending into the buckle at vehicle seat until you hear a click sound.

Note: Make sure that vehicle seat buckle is securely fixed as trying to pull the belt upwards. Make sure belts are not twisted.



Slot for shoulder belts
(into the head support)





TECHNICAL FEATURE



- Depth of car seat – 500mm
- Width of car seat – 445 mm
- Height of car seat – 582 mm
- Weight of car seat – 5,6 ±0,5 kg

CARE AND MAINTENANCE

- ❖ Clean the fabrics, plastic parts and metal parts with damp cotton cloth or sponge and mild soap.
- ❖ Soft pads may be hand washed at 30°C using mild detergent!
- ❖ Do not bleach! Do not tumble dry! Do not machine wash! Do not iron!
- ❖ Do not use abrasive, bleach or other aggressive detergents.
- ❖ Always after cleaning leave the car seat fully dry and after that use it or store it.
- ❖ Harnesses must be cleaned with damp cloth and mild soap!
- ❖ Do not wet or remove the stickers. They contain important information!
- ❖ Always store your car seat indoors – on dry and clean place. Do not expose to direct environment influence - sun, rain, moisture and high temperature intervals.
- ❖ Please, contact your authorized dealer for problems connected with the use or repair.

Materials used: plastic, metal, textile

STKPA021xxxx



1 Golyamokonarsko shosse, PLOVDIV, BULGARIA

www.chipolino.com