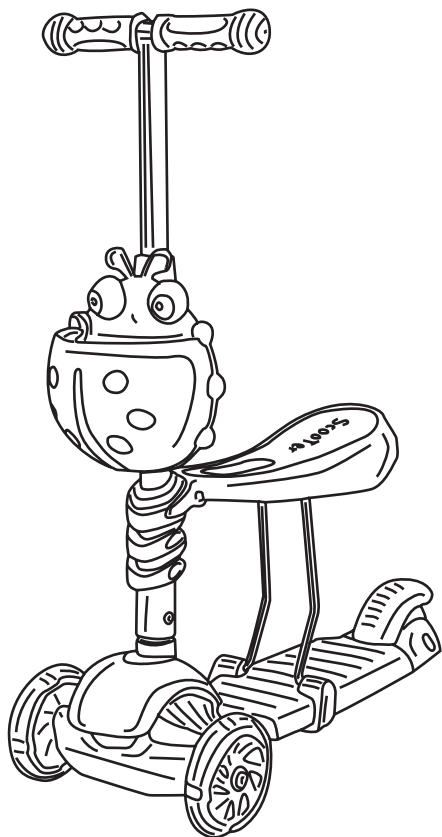


**IMPORTANT! KEEP THIS INSTRUCTION MANUAL FOR
FUTURE REFERENCE**

INSTRUCTION MANUAL FOR USE OF KID'S TOY SCOOTER KIDDY EVO



This product **chipolino** is produced in conformity with the requirements of the Toy Safety Directive 2009/48/EC of the European Parliament and the Council, national legislation and the applicable to the product European Standards.

TO GUARANTEE THE SAFE USE OF THIS PRODUCT, FOLLOW THE WARNINGS, GUIDELINES AND RECOMMENDATIONS IN THIS MANUAL:

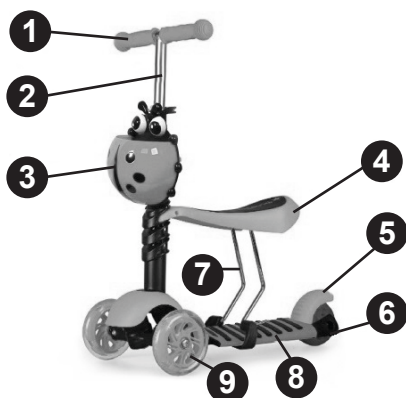
CAUTION! IMPORTANT WARNINGS!

- ❖ **CAUTION!** USE ONLY UNDER DIRECT ADULT SUPERVISION – DANGER OF FALLING!
- ❖ **CAUTION!** THE TOY IS SUITABLE FOR CHILDREN UP TO 3 YEARS AND WIEGHT UP TO 20KG!
- ❖ **CAUTION!** DO NOT OVERLOAD! THE TOY IS NOT SUITABLE FOR CHILDEN ABOVE 3 YEARS AND WEIGHT ABOVE 20kg.
- ❖ **CAUTION!** BEFORE USING THE TOY, TEACH THE CHILD THE CORRECT WAY TO USE IT AND THE SAFETY RULES. Using the toy requires special skills and increased caution to avoid falling and collisions.
- ❖ **CAUTION!** WEAR PROTECTIVE EQUIPMENT – helmet, knee and elbow protectors, suitable shoes.
- ❖ **CAUTION!** BEFORE EACH USE, CHECK IF THE HANDLEBAR IS WELL FIXED TO THE DECK AS WELL AS IF ALL SCREWS, NUT AND BOLTS ARE WELL TIGHTENED.
- ❖ **CAUTION!** USE THE TOY ONLY DURING THE DAY ON SECURED PLAYGROUNDS AT A SAFE DISTANCE FROM STREETS AND VEHICLE ROADS.
- ❖ **CAUTION!** KEEP AWAY FROM FIRE!
- ❖ **CAUTION!** USE THE TOY ONLY FOR ITS PURPOSE.
- ❖ **CAUTION!** THIS TOY IS NOT INTENDED FOR AGGRESSIVE RIDE, TRICKS AND JUMPS!
- ❖ **ONLY** an adult should assemble and disassemble the TOY!
- ❖ **DO NOT** allow presence of children under 3 years before having assembled the TOY completely, to avoid access to small and dismantled parts!
- ❖ This TOY is intended for one child **ONLY!**
- ❖ **DO NOT** use the TOY if you find missing or damaged parts.
- ❖ Maximum load in the storage basket up to 300g!
- ❖ **DO NOT** use the brake while turning left or right, this can cause the child to fall!
- ❖ **DO NOT** attach strings or accessories to the TOY to avoid risk of entanglement!
- ❖ **DO NOT** put items or luggage on the handlebar to avoid risk of balance disturbance!
- ❖ The child must hold the handlebar with both hands to ride safely.
- ❖ **DO NOT** put heavy items or objects on the TOY in order not to damage its construction.
- ❖ **DO NOT** use another transport means to move the TOY by hauling!
- ❖ **DO NOT** let the child using the TOY or other children close to it to touch the wheels with hands and/ or put items on them!
- ❖ Use away from rivers, pools, stairs and hurdles!
- ❖ **DO NOT** make changes or modifications to the construction of the TOY! If necessary, contact the dealer or an authorized service for advice and repair.
- ❖ **DO NOT** use spare parts or other components, which are not supplied by the producer! The producer revokes all responsibility in case you have used spare parts different from the original ones or recommended by him.
- ❖ Keep the plastic bags away from children to avoid risk of suffocation!

PRODUCT FEATURES

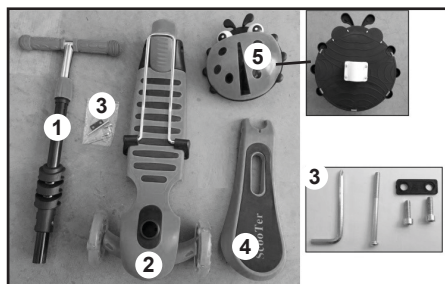
- ❖ THE TOY is suitable for children above 3 years and weight up to 20kg;
- ❖ THE TOY can be used as a scooter and as a ride on car;
- ❖ The seat can be adjusted in height in 3 positions
- ❖ The handlebar can be adjusted in height in 3 positions;
- ❖ Rubber anti-slip handle grips
- ❖ Rear wheel brake;
- ❖ Storage basket for accessories;

MAIN PARTS



- 1 – HANDLEGRIPS
- 2 – HANDLEBAR
- 3 – STORAGE BASKET
- 4 – SEAT
- 5 – BRAKE
- 6 – REAR WHEEL
- 7 – SEAT SUPPORT
- 8 – DECK
- 9 – FRONT WHEELS * 2

Please make sure all parts are available:



- 1 – HANDLEBAR WITH HANDLEGRIPS
- 2 – DECK WITH FRONT (2 PCS), REAR (1 PC) WHEELS AND SEAT SUPPORT
- 3 – FASTENERS AND ALLEN WRENCH
- 4 – SEAT
- 5 – BASKET

ASSEMBLY AND SAFE USE

CAUTION! FOLLOW EXACTLY THE GUIDELINES AND SEQUENCE OF ASSEMBLY AND USE GIVEN IN THE BELOW TEXT AND FIGURES.

CAUTION! CHECK THE SECURITY OF FIXING UPON COMPLETING EACH OPERATION!

CAUTION! THE TOY MUST BE USED WITH INCREASED CAUTION BECAUSE IT REQUIRES SKILLS TO BALANCE. IN THIS WAY YOU WILL AVOID FALLING OR COLLISIONS WHICH MAY CAUSE INJURY TO THE CHILD OR OTHER PEOPLE.

Tools needed: Allen wrench (included in the set).

1 – HANDLEBAR ASSEMBLY

Insert the lower end of the handlebar with pressure in the opening in the deck until you hear a click and the tube of the handle bar is in the respective opening. To remove the handlebar, press the pin and draw the handlebar out.

2 – SEAT ASSEMBLY. HEIGHT ADJUSTMENT - 3 positions

2-1 Place the seat to the handlebar tube.

2-2 Fix the seat support to the corresponding holes on the seat base using the plate and the two screws – use the Allen wrench.

2-3 Fix the seat to the handlebar by bolt.

To adjust seat height:

- Unscrew the bolt which fixes the seat to the handlebar;
- Position the seat in desired level (2-2-A, B, C);
- Fix the seat with the bolt.

3 – STORAGE BASKET INSTALLATION

4 – ADJUSTING THE HEIGHT OF THE HANDLEBAR – 3 positions

- Press the pin;
- Move the handlebar up/down according to your desire;
- When fixed in position the pin will show through the hole and you will hear a click.
- Fix the desired height with the plastic ring.

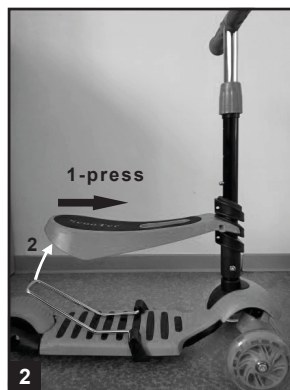
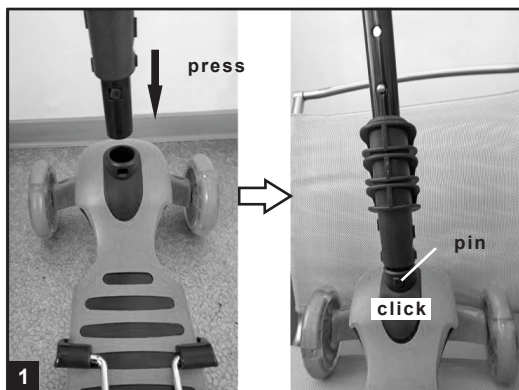
5 – SCOOTER MOVEMENT AND BRAKE USAGE

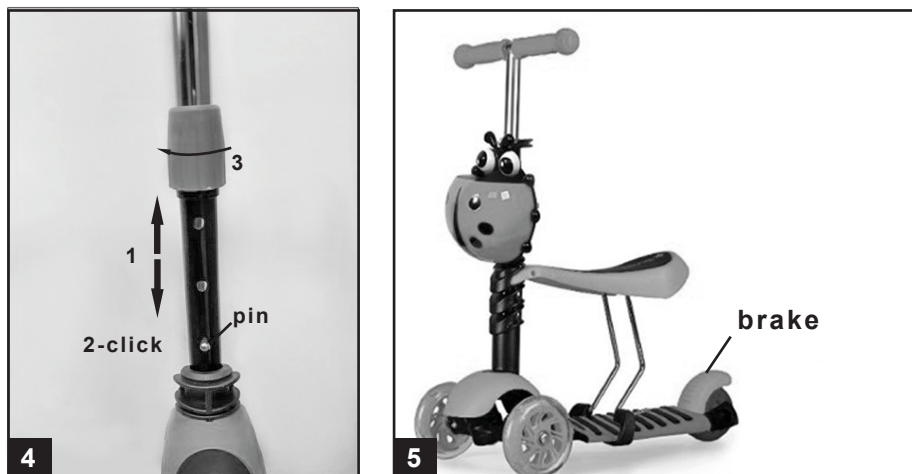
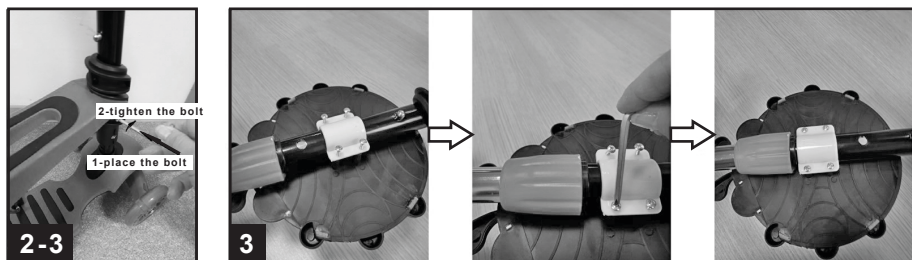
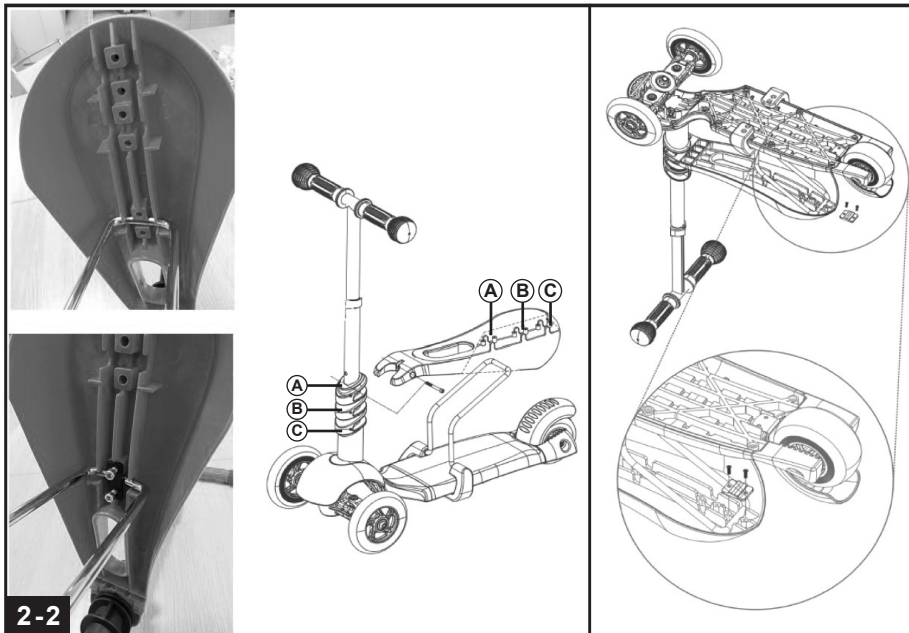
When you tilt the handlebar to the right, the wheels will turn RIGHT and the scooter will turn right.

When in upright position, the scooter will move STRAIGHT.

The rear wheel has a brake. To use the brake during movement, the child can step with its heel on it and press it until the scooter stops.

CAUTION! The brake must be used with only one foot!





Ride on car



Scooter

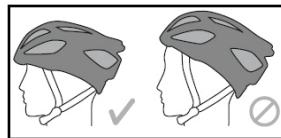


SCOOTER: Remove the seat from the frame of the toy. The child grabs the handlebar with both hands, steps with one foot on the deck and push itself with the other.

RIDE ON CAR: The child sits on the seat, grabs the handlebar with both hands and moves in the desired direction.

For more safety, the child must wear a helmet on the head, knee and elbow protectors and shoes while using the toy!

The helmet must be steady on the head and not tilted back or not protecting the forehead



CARE AND MAINTENANCE

- ❖ Periodically check the good working order of the separate parts.
- ❖ Do not cover the toy with liquid. Clean with soft damp towel and a neutral liquid soap.
- ❖ Do not clean with aggressive detergents containing abrasive particles, ammonia, bleach or spirit.
- ❖ Regularly oil the moving parts.
- ❖ Do not use on sandy terrains.
- ❖ Do not store the TOY places with very warm air or close to heat sources, it will deform.
- ❖ Store the TOY in a clean and dry space. Do not subject to direct environmental influence – sun, rain, moisture or harsh temperature changes!
- ❖ Always dry the TOY or leave it to dry before storing it or using it again. Mildew may appear if you store the product damp.
- ❖ In case of problems related to the normal exploitation of the product, turn to authorized service for advice and repair.

Materials used: plastic, metal, PVC.

DSKIE02xxxx/WX-311



CHIPOLINO LTD., 1 Goliamakonarsko Shosse Str, Plovdiv, BULGARIA

www.chipolino.com