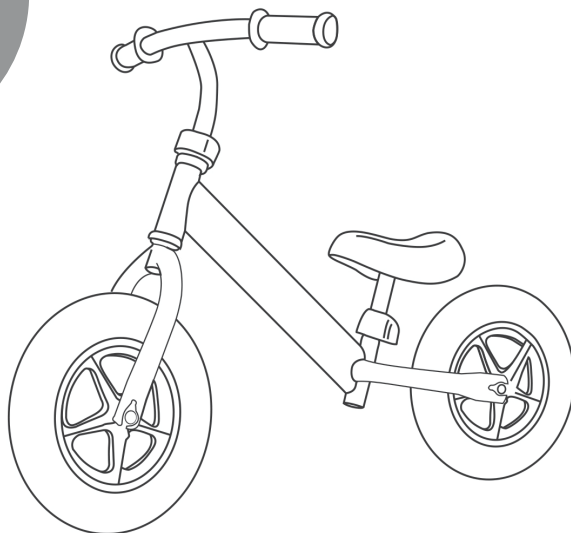


**IMPORTANT! KEEP THIS MANUAL FOR FUTURE REFERENCE!**

**INSTRUCTION MANUAL FOR USE  
FOR KID'S BALANCE TOY ON WHEELS  
"SPEED"**

**SPEED**



This **chipolino** product is produced in conformity with the Toy Safety Directive 2009/48/EC of the European parliament and the council, the National Legislation and the applicable European standards.

**TO GUARANTEE THE SAFE USE OF THIS PRODUCT, FOLLOW THE WARNINGS,  
GUIDELINES AND RECOMMENDATIONS IN THIS MANUAL:**

**IMPORTANT! MAJOR WARNINGS!**

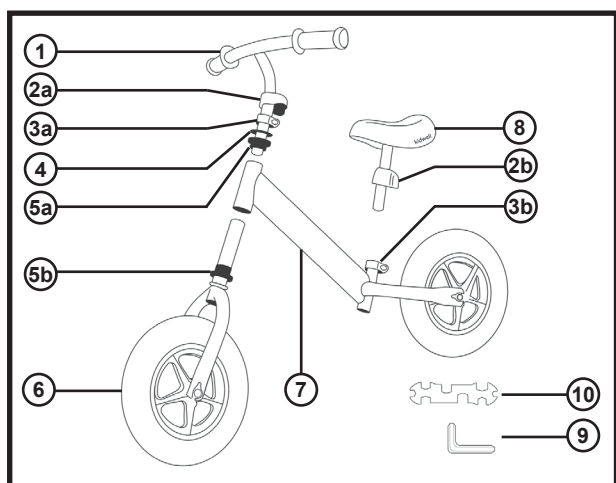
- ❖ **CAUTION!** USE ONLY UNDER DIRECT ADULT SUPERVISION AND WITH A COMPANION – DANGER OF FALLING!
- ❖ **CAUTION!** THIS TOY HAS NO BRAKES!
- ❖ **CAUTION!** TO BE USED ONLY BY CHILDREN OLDER THAN 24 MONTHS! THE TOY IS NOT SUITABLE FOR CHILDREN UNDER 24 MONTHS!
- ❖ **CAUTION!** MAXIMUM CHILD WEIGHT 30kg. DO NOT OVERLOAD! NOT TO BE USED BY CHILDREN MORE THAN 30kg.
- ❖ **CAUTION!** BEFORE USING THE TOY, TEACH THE CHILD THE CORRECT USAGE AND SAFETY RULES.
- ❖ **CAUTION!** THE CHILD MUST WEAR A HELMET, KNEE AND ELBOW PROTECTORS AND SHOES WHEN USING THE TOY!
- ❖ **CAUTION!** USE THE TOY ONLY DURING THE DAY AND ON EVEN SECURED PLAYGROUNDS AT A SAFE DISTANCE FROM STREETS AND ROAD LANES FOR VEHICLES.
- ❖ **CAUTION!** KEEP AWAY FROM FIRE!
- ❖ **CAUTION!** USE THE TOY ONLY FOR ITS PURPOSE.
- ❖ **ONLY** an adult should assemble the TOY!
- ❖ **DO NOT** let children under 3 years near the TOY before you have assembled it, to avoid their access to small and disassembled parts!
- ❖ This TOY is intended for **ONLY** one child!
- ❖ **DO NOT** use the TOY if some parts are damaged or missing.
- ❖ **DO NOT** put additional strings or accessories to the TOY to avoid risk of suffocation!
- ❖ **DO NOT** leave items or luggage on the handle bar to avoid risk of balance disturbance.
- ❖ **DO NOT** put items or heavy objects on the TOY during transportation and storing to avoid damage of the construction.
- ❖ **DO NOT** move the TOY by pulling it with another transport means!
- ❖ **DO NOT** let the child playing with the TOY or other children near it to touch the wheels or put items inside them!
- ❖ Keep away from rivers, pools, stairs and hurdles!
- ❖ ❖ make changes or modifications to the TOY construction! If necessary, contact the retailer or an authorized service for advice and repair.
- ❖ **DO NOT** use spare parts or other components, which are not provided by the producer! The producer revokes all responsibility in case spare parts have been used, which are different from the original ones or recommended by the producer.
- ❖ Keep the nylon package away from children to avoid risk of suffocation!

## PRODUCT FEATURES

**KIDS BALANCE TOY ON WHEELS** is a bicycle without pedals, which develops in your child sense of orientation and speed in a safe way. This creates a feeling of balance and safety because the child's feet are in contact with the ground at all times. While riding the bike, the child learns to balance and exercises different moves (turn left and right), learns to control speed depending on its abilities.

- ❖ The **TOY** is intended for children older than 24 months with weight not more than 30kg.
- ❖ The handle bar and saddle are adjustable in height.
- ❖ Safe grips on the handle bar

## MAIN PARTS



- 1 – HANDLEBAR
- 2a – END CAP OF HANDLEBAR CLAMP
- 2b – END CAP OF SADDLE CLAMP
- 3a – HANDLEBAR CLAMP
- 3b – SADDLE CLAMP
- 4 – FLAT WASHER
- 5a – HANDLEBAR CYLINDER WITH BEARING
- 5b – FRONT WHEEL FOR CYLINDER WITH BEARING
- 6 – FRONT WHEEL FORK
- 7 – BIKE FRAME WITH REAR WHEEL
- 8 – SADDLE
- 9 – HEX KEY
- 10 – BIKE WRENCH

The toy is supplied by the producer partially assembled.

Please make sure all parts are available in the package.

## ASSEMBLY AND USE GUIDE

**CAUTION!** FOLLOW EXACTLY THE GUIDELINES AND SEQUENCE OF ASSEMBLY AND USE, WHICH YOU WILL FIND IN THE TEXT AND FIGURES.

**CAUTION!** CHECK FIXING IS SECURE AFTER COMPLETING EACH OPERATION!

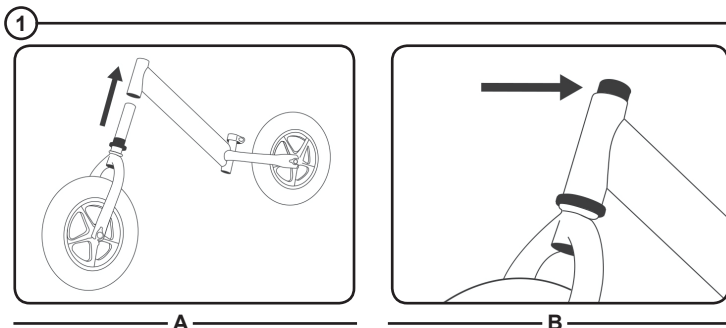
**CAUTION!** TIGHTEN THE BRACKETS WELL. IF THEY ARE LOOSE, THE PRODUCT MAY FALL APART AND THE CHILD MAY BE INJURED.

**Tools needed:** Hex key and bike wrench (included in the set).

### STEP 1:

**A** – Insert the fork with 5b cylinder bearing into the front part of the bike frame. Be careful not to damage the bearing.

**B** – The fork rod should protrude beyond the front part of the frame.



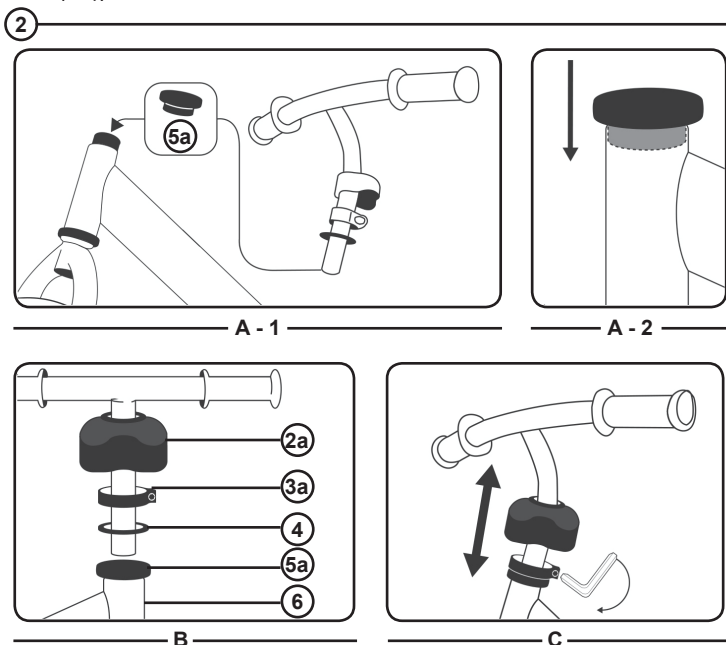
### STEP 2:

**A** – Remove the cylinder bearing 5a from the handlebar, then place it on the protruding fork rod. The narrow part of the cylinder should completely retract in the front part of the frame. This way the fork will be properly connected to the frame which will prevent it from shifting.

**B** – Place the handlebar in the front wheel fork. Make sure that the first element that will be placed above the cylinder bearing is the flat washer (part 4), then the handlebar clamp (part 3a) and at the top the end cap for handlebar (part 2a).

**C** – Adjust the height of the handlebar to suit your child's height and tighten the hex screw of the handlebar clamp clockwise.

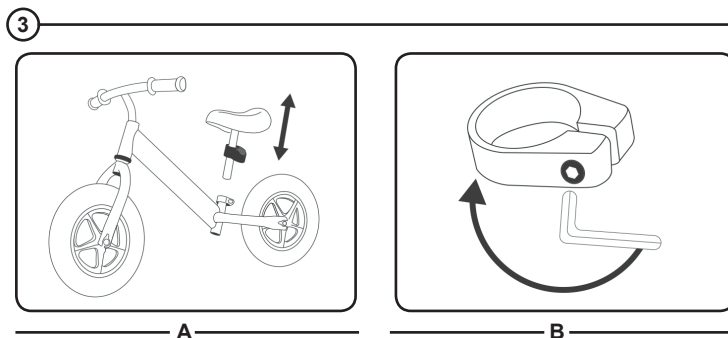
**CAUTION!** There is a security tag on the handle bar post. The handle bar must be adjusted in position so that the security tag is never visible!



### STEP 3:

**A** – First loosen the saddle clamp (part 3b) with hex key so that you can slide the saddle rod through it. When mounting the saddle, remember to adjust it to fit the child's height. Set the saddle in a suitable height position, so that the saddle front is positioned above the tube frame and not sideways

**B** – To lock the saddle at the selected height, tighten the saddle clamp with a hex key clockwise.



**CAUTION!** Adjust the height of the saddle by following the security tag on the post (the mark must not be visible).

**CAUTION!** The toy must be used with increased caution, because it requires balance skills. In this way, you will avoid falling or collisions, which may injure the child or third persons.

#### ❖ CHOOSING THE OPTIMAL POSITION OF THE SEAT

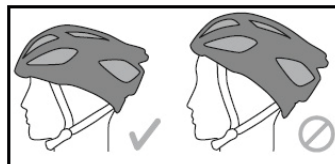
The child must be comfortably seated, not leaning forward to the handle bar and its feet must be in full contact with the ground.

**IMPORTANT!** For beginners we recommend initially to use the lowest position of the seat!

#### ❖ HELMET, KNEE AND ELBOW PROTECTORS, AND SHOES

FOR MORE SAFETY WHEN THE CHILD USES THE TOY, IT SHOULD WEAR A HELMET, KNEE AND ELBOW PROTECTORS AND SHOES!

**The helmet** must be steady on the head, not tilted back or in position in which it does not protect the forehead.



## CARE AND MAINTENANCE

- ❖ Periodically check the good working order of all parts.
- ❖ Do not wet the TOY. Clean with a soft damp towel and a neutral liquid soap.
- ❖ Do not use aggressive detergents containing abrasive particles, ammonia, bleach or spirit.
- ❖ Regularly oil the moving parts.
- ❖ Do not use on sandy surfaces.
- ❖ Do not store the TOY in areas with hot air or close to heat sources, because it will deform.
- ❖ Store the TOY in a clean and dry place. Do not subject to direct environmental influence – sun, rain, moisture or harsh temperature changes!
- ❖ Always dry the TOY or let it dry before storing or using it again. Mildew may appear if you store the product moist.
- ❖ In case of problems related to the normal exploitation, contact the authorized service for advice or repair.

**Materials used:** plastic, metal, rubber.

**DIKSD021xxx/ BB003**



---

Golyamokonarsko shosse 1, Plovdiv, BULGARIA

[www.chipolino.com](http://www.chipolino.com)